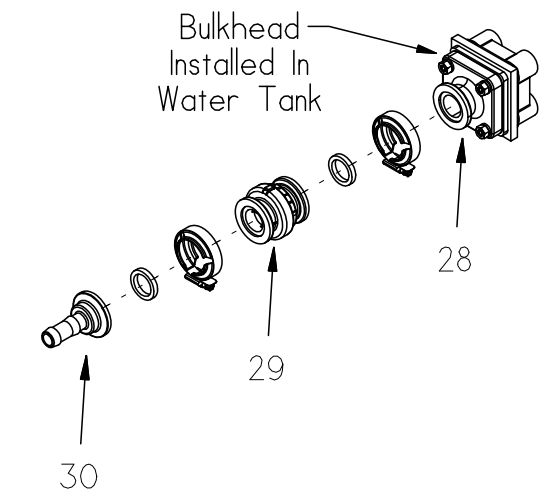


Item	Qty	Part Number	Description
1	1	SPR-5615	Sotera Model 415 Pump
2	1	PPF-HXN-16MP	1" MPT Hex Nipple
3	1	SPR-6560	Sotera Digital Flow Meter
4	2	PPF-9BR-12BX16MP	3/4" x 1" 90° Hose Barb
5	1	FAB-2280	Sotera Pump Mounting Bracket
6	9	FAS-NSD-1/4-20-S	1/4-20 Hex Nut
7	4	FAS-SHC-1/4-20XI1/2-S	1/4-20 x 1/2" Hex Cap Screw
8	12	FAS-WL0-1/4-S	1/4" Lock Washer
9	1	FAB-2281	Chassis Manifold Bracket
10	4	FAS-UBT-20	1/4-20 x 1 1/4" U-Bolt
11	1	FAS-UBT-32	5/16-18 x 2" U-Bolt
12	2	FAS-NYS-5/16-18-S	5/16-18 Nylock Nut
13	4	PPF-V3B-16FL	3 way bottom loading poly valve
14	7	PPF-TEE-16FL	1" Flanged Tee
15	3	PPF-9EL-16FL	1" Flanged 90° Elbow
16	6	PPF-9BR-16FLX12B	1" Flange x 3/4" 90° Barb
17	26	PPF-BJO-16-CLAMP	1" Flange Screw Clamp
18	26	PPF-BJO-16-GASKET	1" Flange Viton Gasket
19	1	PPF-ADP-16FLX16MP	1" Flange x 1" Male Pipe Adapter
20	1	SPR-4207	1" Flat Face Female QD - Poly
21	1	PPF-V2B-16FL	1" Flanged Poly Ball Valve
22	5	FAB-2283	Manifold Label Bracket
23	1	SPR-9704	Fresh Water Label
24	1	SPR-9700	Chemical Tank 1 Label
25	1	SPR-9701	Chemical Tank 2 Label
26	1	SPR-9702	Chemical Tank 3 Label
27	1	SPR-9703	Chemical Probe Label
28	1	PPF-BHD-16FL	3/4" Poly Bulkhead
29	1	PPF-CV-16FL	1" Flange Inline Check Valve
30	1	PPF-SBR-12BX16FL	3/4" Hose Barb x 1" Flange
25		HSE-7225-12	3/4" PVC Suction Hose
24		FAS-7655-08	3/4" Gear Clamp



NOTE:

1. Standard chassis 3 chemical pump configuration.
2. 3/4" Hoses & clamps not shown for clarity. Refer to Chassis closed load system drawing for hose routing.

NORSTAR INDUSTRIES, INC. 2302 A ST SE T: (253) 735-1881 AUBURN WA 98002 F: (253) 735-2051

TITLE: **3 TANK CHASSIS CLOSED LOAD**

DRAWN BY: JG	CHECKED BY:	SCALE: 1:8	PAGE: 1/1
DATE CREATED: 12/18/02	DRAWING NUMBER: NSC-90158	REVISION NUMBER:	