

# **NORSTAR** **INDUSTRIES, INC.**

---

## ***RS 6000 Injection Sprayer Manual***



### **NORSTAR INDUSTRIES, INC.**

#### **Western US Location**

**2302 "A" Street SE  
Auburn WA 98002**

**Phone ..... (253) 735-1881  
Toll Free ..... (800) 735-1881  
Fax ..... (253) 735-2051**

#### **Eastern US Location**

**934 E Main Street  
Headland AL 36345**

**Phone ..... (334) 693-0055  
Toll Free ..... (866) 693-0055  
Fax ..... (334) 693-0066**

**[www.norstarind.com](http://www.norstarind.com)**

Gasoline Driven Injection Skid v5.0

COPYRIGHT © NORSTAR INDUSTRIES INC. 1996-2007 ALL RIGHTS RESERVED

# TABLE OF CONTENTS

## SECTION 1: OVERVIEW

Introduction .....	1
General Description.....	2
RS 6000 Operating Specifications.....	2

## SECTION 2: OPERATION

Start-up .....	3
Chemical Loading	
Standard Loading.....	4
Closed Loading System	
Load Chemical Tank(s) .....	4
Unload Chemical Tank(s) .....	5
Transfer Chemical Between Onboard Tanks.....	5
System Flush.....	6
Sotera Model 850 Meter CAL Factor Selection Procedure .....	6
Calibration (CAL) Factor Table .....	8
Chemical Rates .....	9
Single Chemicals .....	9
Multiple Chemicals In One Tank .....	9
Wettable Powders and Granulars .....	10
Chemical Tank Level Indicators .....	11
Drift Control System .....	11
Shutdown .....	12

## SECTION 3: MAINTENANCE

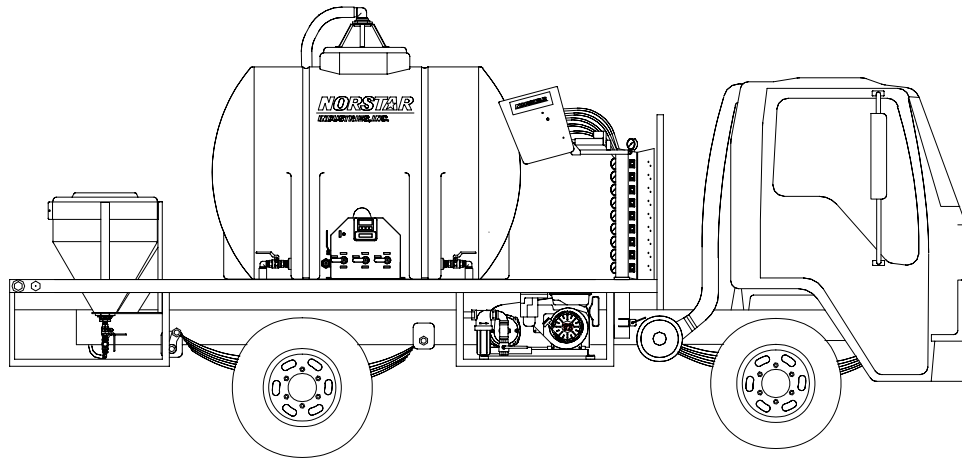
Maintenance Schedule.....	13
Water Pump Pressure Adjustment .....	14
Sprayhead Nozzle Pressure Adjustment.....	15
Sprayhead Nozzle Setup.....	16
Winterizing .....	17
Closed Loading System Maintenance	
Sotera Model 850 Meter Recalibration Procedure .....	18
Sotera Model 850 Meter Troubleshooting Guide .....	19

## **SECTION 4: APPENDICES**

Handgun Operation .....	20
NSC-20108 Nutating Sprayhead Setup.....	23
NSC-20108 35 GPA Nutating Sprayhead Pattern .....	24
NSC-20108 25 GPA Nutating Sprayhead Pattern .....	25
NSC-20108 50 GPA Nutating Sprayhead Pattern .....	26
NSC-90500 Rear Spraybar Pattern.....	27
NSC-20320 Guard Rail Drop Nozzle Pattern .....	28
RS 6000 Master Schematic.....	29
RS 6000 Wiring Diagram.....	30
RS 6000 Console Rear Panel Wiring .....	31

## **SECTION 5: PARTS ASSEMBLY DRAWINGS**

7 Section Sprayhead .....	33
Upper Manifold – Nutating Plate .....	35
Sprayhead Fold.....	36
Solenoid Regulator .....	37
Flow Switch.....	39
Solenoid Valve .....	40
Pressure Regulator .....	42
Injection Skid Water Pump System	
Honda Engine Water Pump .....	44
Injection Skid Plumbing.....	45
Tank Agitation .....	47
Chemical Closed Loading System.....	48
Closed Loading Manifold & Pump.....	49
Chemical Probe .....	51
Rear Spraybar .....	52
Guardrail Drop Nozzle.....	53
Norstar Industries Warranty Statement .....	54



## **RS 6000 ROADSIDE SPRAYER**

### **INTRODUCTION**

Congratulations on the purchase of your Norstar RS6000 Roadside Sprayer. This is a state of the art sprayer for the precise application of herbicides to roadside vegetation. The RS6000 Sprayer uses a TASC 6300 chemical injection system to automatically monitor and control the precise amount of chemical being applied per acre. Each chemical is stored in a separate chemical tank then automatically injected into the water pump at the rate set by the operator. The use of the injection system eliminates any need for premixing the chemical in the sprayer water tank. The mixture is then applied through a low drift boomless sprayhead. This allows the operator to make changes in rates as needed to eliminate over or under application.

We are continually striving to make improvements on the Norstar RS6000 system to keep it the best unit available today. To do this we welcome input from our users so please phone or drop us a line with your comments.

## **GENERAL DESCRIPTION**

The Norstar RS6000 sprayer provides precise chemical application from a boomless sprayhead mounted behind the operator. The sprayhead contains 7 individually controlled boom sections. The sprayhead can be tilted from an in-cab control console to compensate for changes in ditch or embankment slopes.

The RS6000 sprayer has the ability to inject up to three chemicals at a time (6 available with optional Tasc 6600 console). The system injects chemical accurately by using a computer to monitor vehicle ground speed, spray width, and the pre-set chemical application rates. The chemicals are injected at the water pump inlet and thoroughly mixed with water. The mixture is then distributed through the boomless sprayhead manifold to multiple nozzle assemblies. Regardless of changes in ground speed or spray width the computer will automatically maintain chemical injection at the operator's preset application rates.

## **RS6000 SPRAYER OPERATING SPECIFICATIONS**

- Sprayhead is mounted behind the operator to maximize operator safety and to minimize chemical injection lag time.
- All solid stream nozzles are used requiring maximum operating pressures of only 15 to 30 P.S.I.
- Multiple spray sections provide superior spray width flexibility.
- Centrifugal water pump capable of providing 70 to 100 P.S.I.

## **OPERATION START-UP**

**NOTE:** Before initial start-up of this machine both the RS6000 manual and the TASC manual should be read completely. For training, calibration, and testing *NORSTAR INDUSTRIES INC.* recommends water be used in lieu of chemical until the operators feel comfortable with the operation of the machine.

1. Before filling make sure all valves are in the closed position.
2. Fill the main water tank with water.
3. Load chemical into the desired chemical tank(s), refer to the Chemical Loading section for instructions.
4. To install the chemical pump tube, release the tube retaining strap and lift it up and away from the tube rollers.
5. Clean the chemical pump tube rollers and retaining strap with a cloth to remove any dirt or grit from the tube running area.
6. Lubricate the pump tube with tube lube then attach one hose quick disconnect fitting to the left hose connection. Loop the tube over the rollers and down between the tube rollers and tube strap hinge (there is not enough space to between the tube roller assembly and the tube strap hinge to slip the tube in from the front without the possibility of damaging the tube). Stretch the tube enough to lock the right hose quick disconnect fitting in place. To prevent air leaks in the chemical lines, make sure the gaskets does not fall out or get twisted and that both fittings are tightened securely. Swivel the tube retaining strap back into place and secure with the latch.
7. Open the chemical tank valves **ONLY** after the tube retaining strap has been secured with the latch.
8. Open both water tank outlet valves, and then momentarily open the tank drain valve at the water pump inlet to purge the lines of air for initial priming.
9. Start the water pump engine or vehicle engine if the water pump is hydraulically driven.
10. Turn all chemical pump switches off on the TASC Console. Turn on the master switch and a boom switch on the RS6000 console. Now turn the water pump switch on for 45 seconds. This should be enough time to see water discharging through the sprayhead nozzles that you turned on. If not, turn off the water pump switch, open the small drain cock on top of the water pump and allow it to run until air is bled out. This process may have to be repeated several times to completely purge the air out of the system.

**WARNING:** Running the pump without water will cause damage to the pump seals.

11. Once the water pump is primed each sprayhead boom switch should be turned on and off several times to bleed the air out of the solenoid diaphragms. Bleeding air from the solenoids may be required each time the unit runs out of water.

**WARNING:** Do not allow the water pump to run for more than a 5 minutes with all boom switches off. This can cause water pump damage due to overheating.

12. At this point the machine is ready for calibration, (refer to page 23).

**CAUTION:** Calibration is necessary on initial start-up, or when a pump tube is replaced. Also check calibration if application rates seem to be off.

## **CHEMICAL LOADING**

**WARNING:** Protective gear should be worn when handling any chemical.

### **STANDARD LOADING**

1. Close all valves on the chemical tanks.
2. Remove the lid.
3. Pour the desired amount of liquid chemical into the chemical tank and replace the lid.
4. Powders and granular chemicals must be mixed with water. Add water to the chemical tank first, then add the chemical. The chemical should be poured in slowly while agitating until a thoroughly mixed slurry is achieved.

**NOTE:** Constant agitation is required to keep powders and granular chemicals in suspension.

### **CLOSED LOADING SYSTEM (OPTIONAL)**

#### **LOAD CHEMICAL TANK(S)**

- ***At the closed load manifold:***
  1. Attach the chemical probe hose to the flat face quick disconnect located at the bottom of the manifold.
  2. Place the chemical probe in the product container.
  3. Turn the ball valve for the chemical probe to “Load” as indicated on the label.
  4. Turn the ball valve for the desired chemical tank to “Load” as indicated on the label.
- ***At the bottom of the chemical tank to be filled:***
  5. Close the ball valve to the chemical pump.
  6. Open the ball valve to the chemical tank.
  7. Ensure the drain ball valve is closed.
- ***At the transfer pump:***
  8. Select the proper calibration factor on the meter. See Sotera Model 850 Meter CAL Factor Selection Procedure for instructions (refer to page 6).
  9. Turn the transfer pump on and fill until the desired quantity of product is in the tank.
  10. When finished, turn the pump off and move the ball valves on the closed loading manifold to the off position.

## **UNLOAD CHEMICAL TANK(S)**

- ***At the closed load manifold:***
  1. Attach the chemical probe hose to the flat face quick disconnect located at the bottom of the manifold.
  2. Place the chemical probe in the product container.
  3. Turn the ball valve for the chemical probe to “Unload” as indicated on the label.
  4. Turn the ball valve for the chemical tank to be unloaded to “Unload” as indicated on the label.
- ***At the bottom of the chemical tank to be emptied:***
  5. Close the ball valve to the chemical pump.
  6. Open the ball valve to the chemical tank.
  7. Ensure the drain ball valve is closed.
- ***At the transfer pump:***
  8. Turn the transfer pump on.
  9. When finished, turn the ball valves on the closed loading manifold to their off positions.

## **Transfer Chemical Between Onboard Tanks**

- ***At the closed load manifold:***
  1. Turn the ball valve for the chemical tank to transfer **FROM** to “Unload” as indicated on the label.
  2. Turn the ball valve for the chemical tank to transfer **TO** to “Load” as indicated on the label.
- ***At the bottom of the chemical tank to transfer to and transfer from:***
  3. Close the ball valve to the chemical pump.
  4. Open the ball valve to the chemical tank.
  5. Ensure the drain ball valve is closed.
- ***At the transfer pump:***
  6. Turn the transfer pump on until the desired amount of product is transferred.
  7. When finished, turn the ball valves on the closed loading manifold to their off positions.



## **System Flush**

- ***At the closed load manifold:***
  1. Turn the ball valve(s) for the chemical tank line(s) to be flushed to “Load” as indicated on the label.
  2. Turn the water ball valve on the top of the manifold on.
- ***At the bottom of the chemical tanks whose lines are to be flushed:***
  3. Turn the ball valve to the chemical pump on.
  4. Turn the ball valve to the chemical tank off.
  5. Ensure the drain ball valve is closed.
- ***At the transfer pump:***
  8. Turn the transfer pump on.
  9. Continue normal spraying with the chemical pumps on until the chemical lines are clear.
  10. When finished, turn the ball valves on the closed loading manifold to their off positions.

**WARNING:** All ball valves on the closed loading manifold should be in the OFF position when not in use or chemical mixing between tanks can occur.

## **Sotera Model 850 Meter CAL Factor Selection Procedure**

### ***Change Calibration Factor***

1. Turn the meter on.
2. Press and hold button 3 for 3 seconds. Only CAL and the number below it will be displayed.
3. Use the supplied chemical chart to select the proper calibration factor based upon the chemical being used and the temperature.
4. Press button 3 repeatedly to change the number to the desired calibration factor. The number will return to zero after reaching 19.
5. Press button 2 to set the number – the meter is now ready to use.

### ***Product Not Listed On Chart***

If a product does not appear on the supplied chart, a calibration (CAL) factor can be selected using a calibration container. Each CAL factor represents 1% accuracy; so on a 5 gallon calibration container 1% is 0.05 gallons. Follow the procedure listed below to determine the correct CAL factor.

1. Turn the meter on.
2. Change the CAL factor to 4.
3. Prime the system so no air is present.
4. Dispense the product into a calibration container.

5. Determine the amount of product that was dispensed into the container and compare to the meter reading. If the volume displayed on the meter is less than the amount dispensed, select a lower CAL factor. If the volume displayed on the meter is higher than the amount dispensed select a higher CAL factor.
6. Subtract the measured value from the meter reading to obtain the difference.
7. Divide the difference by the accuracy value (1% of the calibration container volume) to find how much to change the CAL factor.
8. Add the result to the current CAL factor to obtain the correct CAL factor for the product.

*Example:*

With the CAL factor set at 4, a product is dispensed into a 5-gallon calibration container.

The calibration container reads 5.00 gallons and the meter reads 5.35 gallons. Therefore, a higher calibration factor is needed.

The difference is then 0.35 gallons:

$$5.35 \text{ gallons (meter reading)} - 5.00 \text{ gallons (measured value)} = 0.35 \text{ gallons}$$

The CAL factor change would then be 7:

$$\frac{0.35 \text{ gallons}}{0.05 \text{ gallons}} = 7 \quad \text{or} \quad \frac{0.35 \text{ gallons}}{1\% \times 5 \text{ gallons}} = 7$$

The correct CAL factor for the product would now be 11:

$$4 \text{ (previous CAL number)} + 7 \text{ (calculated change value)} = 11$$

### Calibration (CAL) Factor Table

[illegible]

<sup>†</sup> Fluid temperature in mini bulk tanks stored outdoors will be approximately the average of the daily high and low temperatures.

## **CHEMICAL RATES**

The Norstar system provides the ability to make speed and width changes without effecting the chemical application rate. The TASC console monitors ground speed and spray widths, automatically increasing or decreasing the speed of each chemical injection pump to maintain preset chemical application rates. Application rates for the water (carrier) differs from chemical in that it is fixed. The gallon per acre (GPA) of water increases as the vehicle speed decreases.

**NOTE:** Care must be taken in the selection of chemical rates to insure the label rates for carrier and chemicals are followed.

### **FLUID OUNCES CONVERSION TABLE**

1 Pint	=	16 Fluid Ounces
2 Pints = 1 Quart	=	32 Fluid Ounces
4 Pints = 2 Quarts	=	64 Fluid Ounces
8 Pints = 4 Quarts = 1 Gallon	=	128 Fluid Ounces

## **SINGLE CHEMICALS**

The single chemical is loaded in the chemical tank, then the ounces per acre application rate is installed in that chemical pump application rate position on the TASC console.

## **MULTIPLE CHEMICALS IN ONE TANK**

**WARNING:** Chemical compatibility should be checked prior to mixing in the chemical tank. Contact the chemical supplier for their recommendation and also mix up a test batch.

Herbicides and additives are commonly mixed in one tank when they are normally dispensed at the same time. For example: if your application rate is 2 Quarts (64 oz.) per acre of herbicide and 1 Pint (16 oz.) per acre of surfactant, then both go into the tank at that ratio. The chemical rate you put in the computer would be the total of both application rates or 80 oz. per acre.

**NOTE:** Accumulated values will be the total of all chemicals in tank.

## **WETTABLE POWDERS AND GRANULARS**

Label rates for powders and granular chemicals are generally labeled in ounces or pounds per acre. To inject these chemicals a slurry must be made by mixing water with the chemical. We suggest using a small quantity to start. For example, start with 1 gallon of water, then add 1 lb. of measured powder and mix thoroughly. Measure the total liquid volume of the mixture. The total liquid volume will be greater than the 1 gallon of water. For example: 128 oz. of water mixed with 1 lb. of powder could possibly make a slurry with a total volume of 132 oz. This is the rate you put in the TASC console if you are applying one pound of chemical per acre.

### **APPLICATION TIPS:**

1. Periodic calibrations should be performed to ensure an accurate application.
2. Use suspenders and anti-foam agents very carefully.
3. Do not allow mixture to stand in tank without agitation for long periods.
4. Mix only what you will use in that day, and flush tank and lines after use to eliminate a blockage.

**NOTE:** Multiple chemicals can be added same as the liquids described on previous page using the same ratio.

**WARNING:** **DO NOT** add **drift control** agents to the slurry mixture or problems can occur.

## **CHEMICAL TANK LEVEL INDICATORS (OPTIONAL)**

Six indicator lights are located in the RS6000 control console. The lights are wired to float switches in the bottom of each chemical tank. When the material level drops below the float level, the tank indicator will come on.

**WARNING:** Care must be taken not to damage float switch in tank bottom when mixing chemical with anything other than standard agitator.

**NOTE:** Due to chemical residue accumulating around the float switch, fresh water rinsing is required on a regular basis to insure proper operation.

## **DRIFT CONTROL SYSTEM (OPTIONAL)**

The drift control system uses a venturi to draw the material out of a chemical tank, through a flow control and solenoid valve, and injects it at the inlet of the water pump. The solenoid valve opens and closes with the master switch on the TASC 6300 console. This will eliminate loading the water pump up with material when sprayhead solenoids are closed but the water pump is still running. The flow control is used to regulate the rate of material being used.

### **Operation**

1. Fill the drift control tank with product.
2. Open the tank shut off valve
3. To adjust the flow control valve to the desired injection rate, start at the lowest setting (first color ring) and working up by monitoring the usage over a few tanks of water.

**NOTE:** Use only drift control products in the 1-% concentrate category like Exacto's Formula 358, Nalco's Sta-Put or similar products.

**WARNING:** When the drift control tank is empty, the shut off valve must be closed for proper water pump operation.

## **OPERATION SHUTDOWN**

1. If granular or dry flowable chemicals are used we recommend you flush the chemical tank and lines with water before step #2.

**NOTE:** With optional closed loading system, close the valve at the bottom of the chemical tank and open the valve to the chemical pump. At the closed loading panel select the water position, open valve on the panel for chemical tank to be flushed, and turn on power switch. Repeat for each chemical pump.

2. Run all the chemical pumps until all sprayhead nozzles show clear water.

**NOTE:** Cycling boom solenoids off and on several times works the best for a system flush.

3. Close all water tank and chemical tank outlet valves.

**WARNING: All valves must be closed when sprayer is not being used to ensure chemical does not contaminate main water tank.**

4. Release the tube retaining strap on Legack chemical pumps. Remove tubes from under rollers on older style chemical pumps.
5. Turn the power switches on the TASC and the RS6000 consoles to the off position. This will prevent battery drain.
6. Unit is ready for storage at above freezing temperatures. For below freezing temperatures see the winterizing section.

## **MAINTENANCE SCHEDULE**

### **DAILY**

1. Check the oil in the auxiliary engine or hydraulic tank as required.
2. Inspect the nozzles on the sprayhead for build up and clean with a soft bristled brush if necessary.
3. Check the spray pattern for uniform coverage and adjust as needed.
4. Check operating pressures of the sprayhead boom sections at regulator gauges.
5. Inspect all chemical tanks and lines for possible damage.
6. Clean and inspect the chemical pump tubes, rollers and housing for wear or damage.
7. Lubricate the chemical pump tube with the correct tube lube only.
8. Check all calibration numbers in the TASC 6300 console.

### **WEEKLY**

1. Clean the face of the radar unit with a damp soft cloth.
2. Clean the water pump inlet and outlet strainers (daily when water quality is poor).

### **AS REQUIRED**

1. Disassemble, clean, and inspect the solenoids, replacing diaphragms as needed.
2. Remove and clean the regulator screens located under the large hex, behind the gauge on each regulator.
3. Check pressures of individual sprayhead boom sections using a calibration gauge.
4. Clean the air filter and change the oil in auxiliary engine if so equipped (see engine owners manual).
5. Change the hydraulic return filter after the first 150 hours, then 500 hours after that if so equipped.
6. Clear ¼" bypass line between water pump and injection point at the water pump at least once a season. More often if powders are used.

**WARNING:** Disconnect all battery cables to the RS6000 system if **ANY WELDING** is done on chassis. Disconnecting the power will not erase the information stored in the console.



## **WATER PUMP PRESSURE ADJUSTMENT**

**NOTE:** Maximum water pump pressure is 100 PSI with solenoids closed (deadheaded).

### **ENGINE DRIVEN**

1. Start auxiliary engine and allow the engine to warm up.
2. Turn on the water pump switch and run water through a few sprayhead boom sections to ensure no air is trapped in the pump.
3. With all sprayhead boom switches off (deadheaded), the pressure on the main system gauge should indicate 75 - 80 PSI.
4. To change the pressure increase or decrease the engine throttle as required.

### **HYDRAULIC DRIVEN**

1. Start chassis engine and set throttle at high idle (1000 RPM).
2. Turn on the water pump switch and run water through a few boom sections to ensure no air is trapped in the pump.
3. With all boom sections off (deadheaded), the pressure on the main system gauge should indicate 75 - 80 PSI.
4. To change the pressure, loosen the jamb nut on the water pump speed control knob (hydraulic flow control), make the required adjustment and tighten jamb nut.

## **SPRAYHEAD NOZZLE PRESSURE ADJUSTMENT**

**NOTE:** Main pump pressure should be checked before setting sprayhead boom sections.

1. Disconnect the power wire located on the back of nutating motor.
2. Remove one nozzle from the #1 sprayhead section. Install a calibration gauge and tube assembly (part # NS3110) in the open #1 nozzle hole with the nozzle installed in the end of calibration tube. Position the gauge so other nozzles do not spray on the gauge.
3. Start the water pump and turn on #1 sprayhead nozzle assembly.
4. Check the pressure on the gauge installed and adjust if required (see nozzle chart specific to sprayhead assembly).

**NOTE:** Pressure gauges on sprayhead regulators are for reference only. They will indicate a higher pressure than calibration gauge due to pressure drops.

5. If an adjustment is necessary, loosen the jamb nut on the tee handle at the back of the regulator for # 1 nozzle assembly.
6. Turn the tee handle clockwise to increase pressure and counter clockwise to reduce pressure then tighten the jamb nut.
7. Turn the sprayhead boom section on and off a few times and re-check pressure.
8. Turn off the sprayhead boom section, stop the water pump and remove the calibration gauge.
9. Repeat the procedure on all sprayhead nozzle assemblies
10. Connect the power wire on nutating motor.
11. Check the spray pattern and adjust as needed.

## **SPRAYHEAD NOZZLE SETUP**

The standard Norstar RS6000 Nutating sprayhead is supplied with nozzles that apply water (carrier) at a rate of 35 gallons per acre at 11 MPH. This is achieved by taking pressure readings directly at the nozzle assemblies and adjusting the individual regulators to the values shown on the tables below. The use of solid stream nozzles reduces drift, but it is recommended that drift control agents also be used.

### **STANDARD NOZZLE SET**

#### **35 GPA @ 11 MPH - C-CAM**

Boom Section	Nozzle	Qty	Width	Pressue
#1	S1/8U-0006	4	2' ( 24" )	20 PSI
#2	S1/8U-0007	3	2' ( 24" )	20 PSI
#3	S1/8U-0011	4	4' ( 48" )	20 PSI
#4	S1/8U-0014	3	4' ( 48" )	20 PSI
#5	H1/8U-0010	4	4' ( 48" )	25 PSI
#6	H1/8U-0014	4	6' ( 72" )	25 PSI
#7	H1/8U-0014	4	6' ( 72" )	25 PSI

### **OPTIONAL NOZZLE SETS**

#### **25 GPA @ 11 MPH - C-CAM**

Boom Section	Nozzle	Qty	Width	Pressue
#1	S1/8U-0004	4	2' ( 24" )	20 PSI
#2	S1/8U-0005	3	2' ( 24" )	20 PSI
#3	S1/8U-0007	4	4' ( 48" )	20 PSI
#4	S1/8U-0010	3	4' ( 48" )	20 PSI
#5	H1/8U-0007	4	4' ( 48" )	25 PSI
#6	H1/8U-0010	4	6' ( 72" )	25 PSI
#7	H1/8U-0010	4	6' ( 72" )	25 PSI

#### **50 GPA @ 11 MPH - C-CAM**

Boom Section	Nozzle	Qty	Width	Pressue
#1	S1/8U-0008	4	2' ( 24" )	20 PSI
#2	S1/8U-0010	3	2' ( 24" )	20 PSI
#3	S1/8U-0015	4	4' ( 48" )	20 PSI
#4	S1/8U-0020	3	4' ( 48" )	20 PSI
#5	H1/8U-0013	4	4' ( 48" )	25 PSI
#6	H1/8U-0020	4	6' ( 72" )	25 PSI
#7	H1/8U-0020	4	6' ( 72" )	25 PSI

**NOTE:** For special nozzle requirements consult the factory.

## **WINTERIZING**

1. Empty the chemical tanks completely and flush thoroughly with water.
2. Open both water tank outlet valves and drain valve. Close them after tank is completely empty.
3. Fill each chemical tank with one half-gallon of RV antifreeze.

**NOTE:** With optional closed loading, use the chemical probe in the antifreeze container to load tanks. This will fill the tanks and also protect the closed loading system.

4. Install the chemical pump tubes, secure tube retaining strap with the latch, and open the chemical tank valves
5. With the water pump **NOT RUNNING** turn on the TASC console, all chemical pump switches, and all sprayhead solenoid switches.
6. Turn the sprayhead boom width switch to auto, display selector to test speed, and set a 15 mph test speed.
7. Turn on the master switch, which should cause the chemical pumps to inject antifreeze into the water pump. Run all pumps until tanks are empty.
8. Fill one tank with the remainder of antifreeze and use only 1 pump to finish.
9. Shut off each sprayhead boom section switch as antifreeze is seen coming out of the respective nozzles.
10. Turn off the master switch, set the boom width switch to B or C, and open one of the water tank outlet valves. Note: The wider the setting will cause the pump to run faster.
11. Turn on section #9. It may require plugging off the section with a QD cap or crimping the hose to keep material from being discarded out of the boom section.
12. Turn on the master switch until antifreeze is seen in water tank then shut off the master switch.
13. Close the water tank outlet valve and repeat the procedure with the second valve.
14. Use the same procedure as the water tank to fill the hose reel. Be sure to lock the handgun trigger on and open the handgun feedline valve before starting pumps. Do not close feedline valve or release handgun trigger with pumps running.

**NOTE:** Winterizing your sprayer should take approximately 2 - 3 gallons of antifreeze

# **CLOSED LOADING SYSTEM MAINTENANCE**

## **Sotera Model 850 Meter Recalibration Procedure**

Over time, the chamber inside the meter will wear, requiring recalibration. The 850 meter is designed to be recalibrated with water for safe handling and to provide a consistent baseline measurement. Recalibrating the meter with clean water will insure the CAL factors remain accurate.

You will need a container of known volume, at least 5 gallons or larger. Do not exceed a 60-gallon container.

1. Press buttons 2 and 4 at the same time and hold for 3 seconds. The display will read the version of the software loaded in the meter (example: "7r1.02")
2. Press button 3 to enter calibration mode. The unit of measure will be displayed.
3. Press the ON button to change the unit of measure, if required.
4. Press button 3. The display will read "FILL".
5. Now dispense fluid into your container. "FILL" will flash on the display. For best results, dispense fluid at the same flow rate that will be used in actual use.
6. After dispensing, press the ON button. The left digit of the display will blink.
7. Press button 4 to increment the digit to the amount of fluid dispensed (example 05.00). Press the ON button to move to the right. If you make a mistake, press button 2 to start back at the left-most digit.
8. After the number is entered, press the ON button again to accept.
9. Display will now show CAL 4. Press the ON button again to accept. The display will again show the software version loaded on the meter.

**NOTE:** If the value entered is out of an acceptable range, the display will read "Err0" and the meter will revert to the previous settings.

10. Press button 2 to get back to the normal operating mode.

## **Sotera Model 850 Meter Battery Replacement Procedure**

The low battery icon will flash when the batteries begin to lose power. The meter will still function properly for several days after the icon begins to flash. The calibration, current total, and totalizer quantities will not be lost when replacing the batteries.

1. Unscrew the meter cap by hand.
2. Insert a flat-head screw driver into the face plate pry slot and gently pry up the face plate.
3. Gently lift off the face plate being careful to not pull on the lead wire between the face plate and the meter housing.
4. Remove the old batteries and insert new ones, making sure the battery polarity is correct. Meter damage could occur if the batteries are installed incorrectly.

5. Make sure the o-ring is on the meter face plate and press the face plate gently down into the meter housing.
6. Screw the meter cap back onto the meter until hand tight.

## **Sotera Model 850 Meter Troubleshooting Guide**

<b>Problem</b>	<b>Possible Cause</b>	<b>Solution</b>	<b>Notes</b>
Meter won't turn on	<ul style="list-style-type: none"> <li>Dead batteries</li> <li>Damaged or contaminated electronics module</li> </ul>	<ul style="list-style-type: none"> <li>Replace batteries.</li> <li>Replace electronics module &amp; gaskets.</li> </ul>	Seal to electronic chamber is broken if display label is removed or punctured.
Flashing decimal	<ul style="list-style-type: none"> <li>Current total has rolled over.</li> </ul>	<ul style="list-style-type: none"> <li>Reset meter (if desired).</li> </ul>	Meter will continue to operate normally.
Flashing or dim display	<ul style="list-style-type: none"> <li>Low batteries.</li> </ul>	<ul style="list-style-type: none"> <li>Replace batteries.</li> </ul>	Use alkaline batteries.
Fluid flows; meter won't count	<ul style="list-style-type: none"> <li>Meter disk sticking.</li> <li>Damaged driver or magnet.</li> <li>Meter failure.</li> <li>Air sensor sticking</li> </ul>	<ul style="list-style-type: none"> <li>Clean out meter chamber.</li> <li>Repair or replace chamber assembly.</li> <li>Repair or replace meter.</li> <li>Remove and clean air sensor.</li> </ul>	
Meter reads high	<ul style="list-style-type: none"> <li>Entrained air in system.</li> <li>Wrong calibration factor.</li> </ul>	<ul style="list-style-type: none"> <li>Prime system; fix suction leak at pump.</li> <li>Use a higher calibration factor.</li> <li>Check fluid temperature.</li> </ul>	Meter will count air. Chemical formulations sometimes change.
Meter reads low	<ul style="list-style-type: none"> <li>Wrong calibration factor.</li> <li>Meter chamber is worn.</li> <li>Damaged or severely worn chamber.</li> </ul>	<ul style="list-style-type: none"> <li>Use a lower calibration factor.</li> <li>Check fluid temperature.</li> <li>Recalibrate meter with water<sup>†</sup>.</li> <li>Replace the chamber and recalibrate meter<sup>†</sup>.</li> </ul>	Chemical formulations sometimes change.
Meter is not consistent	<ul style="list-style-type: none"> <li>Entrained air in system.</li> <li>Particulates in fluid.</li> <li>Meter has worn or damaged chamber.</li> </ul>	<ul style="list-style-type: none"> <li>Prime system; fix suction leak at pump.</li> <li>Put screen in front of meter.</li> <li>Replace chamber.</li> </ul>	40 mesh minimum.
Err0	<ul style="list-style-type: none"> <li>Calibration error.</li> <li>Damaged chamber.</li> </ul>	<ul style="list-style-type: none"> <li>Recalibrate meter with more accurate container<sup>†</sup>.</li> <li>Replace chamber.</li> </ul>	Indicates fluid calibration is out of acceptable window. Volumetric container may be off, or the meter chamber may be damaged.
Err1	<ul style="list-style-type: none"> <li>Damaged electronics.</li> <li>Software fault.</li> </ul>	<ul style="list-style-type: none"> <li>Repair or replace electronics.</li> <li>Press button 2 then recalibrate meter<sup>†</sup>.</li> </ul>	Contact factory.
Err2	<ul style="list-style-type: none"> <li>Bad eeprom.</li> </ul>	<ul style="list-style-type: none"> <li>Replace electronics.</li> </ul>	Meter still functions, but all data will be lost if batteries are removed.

<sup>†</sup> See Sotera Model 850 Meter Recalibration Procedure

# RS 6000 ROADSIDE SPRAYER

## HANDGUN OPERATION

### TASC 6000/6300/6600 MANUAL SUPPLEMENT

TASC roadside operations require, at least, TASC software level 3.10 or above, the inclusion of an external handgun function switch, an interface cable and a flow switch in the handgun feed line.

There are special features of the TASC available to Roadside Applicators in both the handgun and normal modes. The handgun option allows the user to set chemical injection rates based on carrier flow rates, (i.e., ounces per 100 gallons of carrier.) Pumps start and stop in response to the start of carrier flow sensed by a flow sensing switch. Chemical injection will only occur when the handgun trigger is pulled and flow is established.

**SET-UP MODE FUNCTIONS:** First put the TASC in the handgun mode. To do this, set the mode switch on the RS 6000 console to "HANDGUN". Now, Turn the TASC power "ON" and put the mode selector switch to "SET-UP".

The following programming functions are available in the TASC console:

- SPEED:** An "Err" message will appear (GSO is not available in the handgun mode.)
- AREA:** Area will not accumulate in handgun mode.
- CHEM., CHEM. APPLIED:** This is the pump calibration number for each injection pump (see Section 2.8 in the TASC manual.)
- CHEM., CHEM. RATE:** With pump switch in the "ON" position, program the rate as ounces per 100 gallons of carrier (use the INC/DEC switch to set this rate.) With pump switch in the "ALT" position, the display will read as a ratio (i.e. 1:100 ,1gal. or "128 oz." chemical to 100 gal. Carrier). The pump can be programmed in either position.
- CHEMICAL, % RATE:** Use the INC/DEC switch to select the desired rate change % for chemicals.
- CARRIER RATE:** Use the INC/DEC switch to set the desired carrier rate to zero, "**0**" **GALLONS PER MINUTE**. The console will operate in a **MONITOR ONLY MODE** regulating flow by the handgun nozzle size and pressure.
- CARRIER TOTAL APPLIED:** The flow meter calibration number (Section 2.6 in the TASC Manual.)
- WIDTH:** The message "none" will appear (boom width is not used in the handgun mode.)
- DISTANCE:** The distance calibration number (Section 2.7 in the TASC Manual.)
- PRIME:** The prime volume for each pump (Section 2.8.4 in the TASC Manual.)
- SCAN:** An "Err" message will appear (there is no programming in SCAN.)

**OPERATE MODE FUNCTIONS:** Now put the TASC mode selector switch to “OPERATE”.

The following programming functions are available in the TASC console:

<b>SPEED:</b>	This is a direct reading of ground speed.
<b>AREA:</b>	Area will not accumulate in the handgun mode.
<b>CHEM., CHEM. APPLIED:</b>	Accumulated ounces as they are applied, switches to hundredths of gallons after 256 ounces are accumulated.
<b>CHEM., CHEM. RATE:</b>	This register will indicate the programmed standard rate, regardless of the switch position “ON” or “ALT” the display will read as a ratio (i.e. 1:100 ,1gal.or”128 oz.” chemical to 100 gal. Carrier).
<b>CHEMICAL % RATE:</b>	Allows changing chemical injection rates a preset per-percentage (Section 3.4.2.1 in the TASC Manual.)
<b>CARRIER RATE:</b>	The display will show “Flow <b>Contl</b> OFF Auto, Handgun” with no flow and the actual carrier flow rate in gallons per minute once flow is established.
<b>CARRIER TOTAL APPLIED:</b>	Accumulated gallons applied.
<b>WIDTH:</b>	“None” (boom widths are not used in the handgun mode.)
<b>DISTANCE:</b>	Accumulated distance in feet or miles.
<b>PRIME:</b>	Used for priming the injection pumps (section 3.5 in the TASC Manual.)
<b>TEST SPEED:</b>	The gallons per minute programmed in the “SET-UP” mode is displayed.
<b>SCAN:</b>	Scans information in the accumulators and registers.

#### **SPECIAL CONSIDERATIONS WHEN USING THE HANDGUN MODE:**

- A. **PUMP CALIBRATIONS:** The speed of the injection pumps during calibration is determined by the programmed test speed (gallons per minute) and the programmed chemical application rate (ounces per 100 gallons.) Set these numbers to your typical operating conditions before doing the pump calibrations.
- B. The injection pumps will operate at the speed necessary to apply the correct amount of chemical according to the **actual** carrier application rate. The pump speed will change to compensate for changes in carrier flow.
- C. Booms are not used in the handgun mode. If the TASC senses a boom “ON” condition, it will indicate an “Err” and will stop the injection pumps.
- D. The values programmed into the TASC console while in the handgun mode will remain in console memory, even when the normal mode is selected. Any time the handgun mode is again selected, these values will automatically be present in the TASC console.
- E. Selecting TEST SPEED on the TASC console, while in the “OPERATE” mode, will cause injection pumps to control to the programmed test rate.



## TYPICAL OPERATION IN THE HANDGUN MODE

- A. Set the mode switch on the RS 6000 console to "handgun", Master switch, Boom switches, and the Ground Speed Override Switch to "OFF":
- B. Select "SET-UP" for the TASC console mode selector. Program the TASC console as necessary (See SET-UP Mode, Page 1.)
- C. Zero the accumulated rates as necessary.
- D. Select "OPERATE" with the TASC console mode selector switch
- E. Turn "ON" the desired chemical injection pumps.
- F. Be sure the carrier pump is operating. Open handgun shutoff valve, depress the handgun trigger and the chemical injection pumps will be activated at the speed necessary to apply the desired rates of ounces per hundred gallons according to the actual carrier rate. There is no delay to the control of the injection pumps. (NOTE: the carrier flow rate is the sum of the carrier and the injected chemicals.)

**WARNING:** Rapid triggering of handgun can cause incorrect application or inadvertent error messages.

- G. Releasing the handgun trigger will cause the chemical injection pumps to stop immediately.
- H. Set the Auto / B / C / Handgun rotary switch to "Auto" and the TASC console will then be ready for the previously programmed broadcast spraying operations.

## ERROR MESSAGES AND RESPONSES IN THE HANDGUN MODE (See also, Section 8.0 in the TASC Manual)

Error-1: "Error - 1, Pump #" This indicates the displayed pump is running at its maximum rate. An Error-1 condition lasting more than 5 seconds will cause all the injection pumps to stop injecting. Check power connections and programming. Check that the pump is large enough for the desired flow. Once the problem is corrected, Error-1, Pump # is cleared by first selecting "Auto" and then returning to the "Handgun" mode on the switch panel.

Error-3: "Error - 3, Pump #" This indicates there are no sensor pulses being received from the displayed pump. An Error-3 condition lasting more than 5 seconds will cause all the injection pumps to stop injecting. Check power, ground and fuses on the pump power cable. Check the programming. Check if the pump runs before the error condition occurs. Once the problem is corrected, Error-3, Pump # is cleared by first selecting "Auto" and then returning to the "Handgun" mode on the switch panel.

Error-4: "Error - 4, Pump #" An Error-4 condition indicates that the displayed injection pump is running when it should be off. An Error-4 condition will immediately cause all the injection pumps to stop injecting. Check for normal operation of the injection pump. Error-4, Pump # is cleared by first selecting "Auto" and then returning to the "Handgun" mode on the switch panel. The pump driver module may need to be replaced if the problem persists.

## BOOM WIDTHS FOR SPECIAL PURPOSES, Normal Operations Only

For broadcast spraying operations, separate widths can be programmed into the "B" or "C" widths on the TASC console. Select the "B" Width or "C" Width on the RS 6000 console. Select the width display function and the "SET-UP" mode on the TASC console. Enter the desired width in inches.

Now, whenever boom width "B" or "C" is selected on the switch panel, the TASC console will automatically adjust its Chemical output for the programmed width, regardless of the width programmed for the individual boom sections.

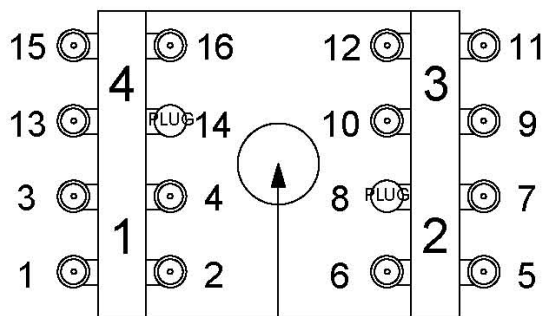
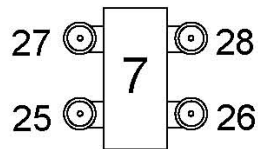
# NUTATING SPRAYHEAD SET UP

Step 1. Disconnect power to nutating motor.

Step 2. Rotate Nutating shaft until nozzles spray closest to truck

Step 3. Set respective nozzles at distance from edge of truck bed.

Step 4. Make minor adjustments to nozzles to insure full coverage.



Sprayhead Mounted with center of nutating bearing 6' from the ground



## C - CAM

Nozzle #	Distance
1	0"
2	6"
3	12"
4	18"
5	24"
6	33"
7	41"
8	Plug
9	52"
10	61"
11	70"
12	81"
13	92"
14	Plug
15	105"
16	124"

Remaining Nozzles are Set to give full coverage

**NORSTAR**  
INDUSTRIES, INC.

2302 A St. S.E. Tel: (253) 735-1881  
Auburn, WA 98002 Fax: (253) 735-2051

TITLE:

## NUTATING SPRAYHEAD SET UP

DRAWN BY:

MRM

CHECKED BY:

SCALE:

1:2

PAGE:

1/1

DATE CREATED:

7/12/94

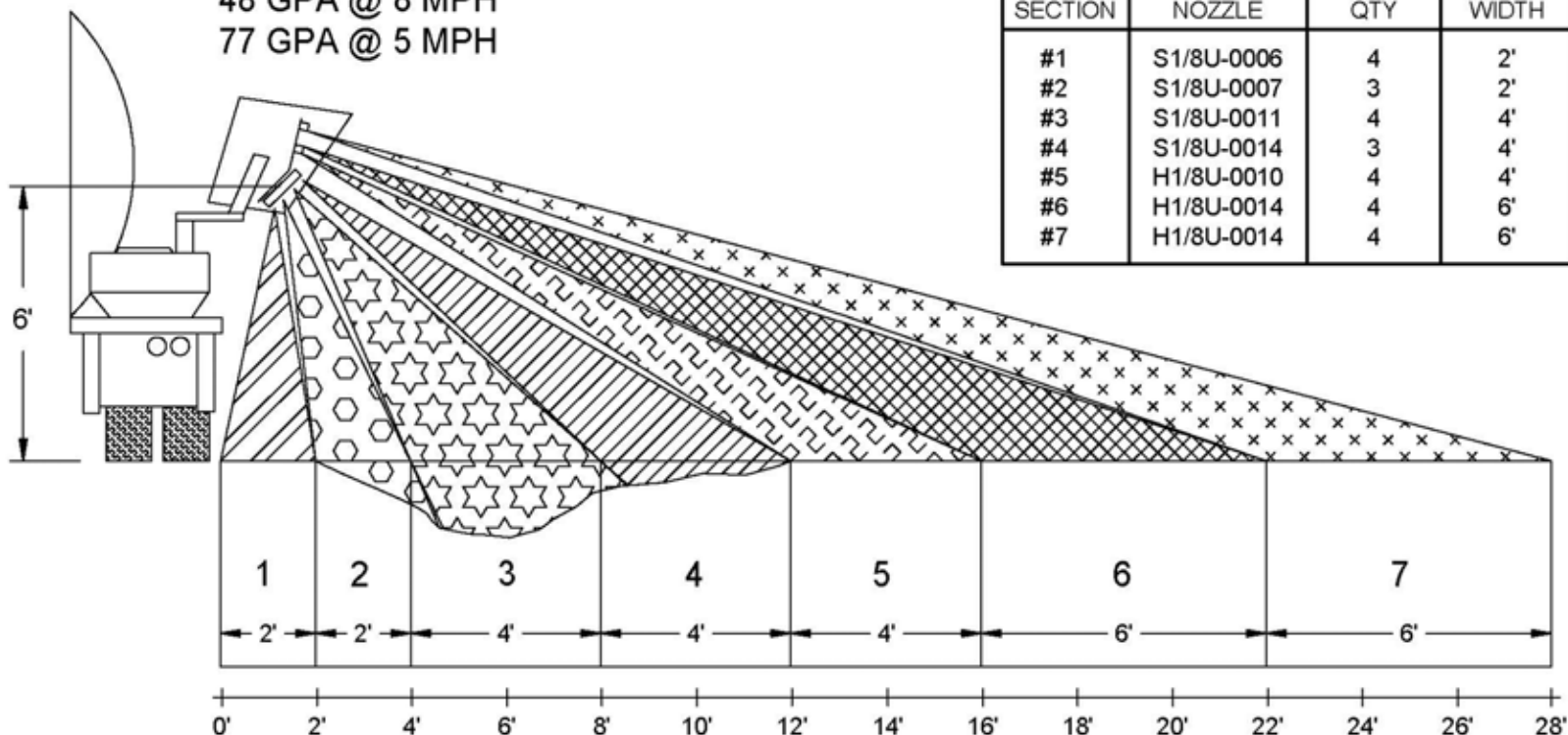
DRAWING NUMBER:

DATE REVISED:

5/26/95

# NSC-20108-V2 NUTATING SPRAYHEAD SPRAY PATTERN

25 GPA @ 15 MPH  
35 GPA @ 11 MPH  
48 GPA @ 8 MPH  
77 GPA @ 5 MPH

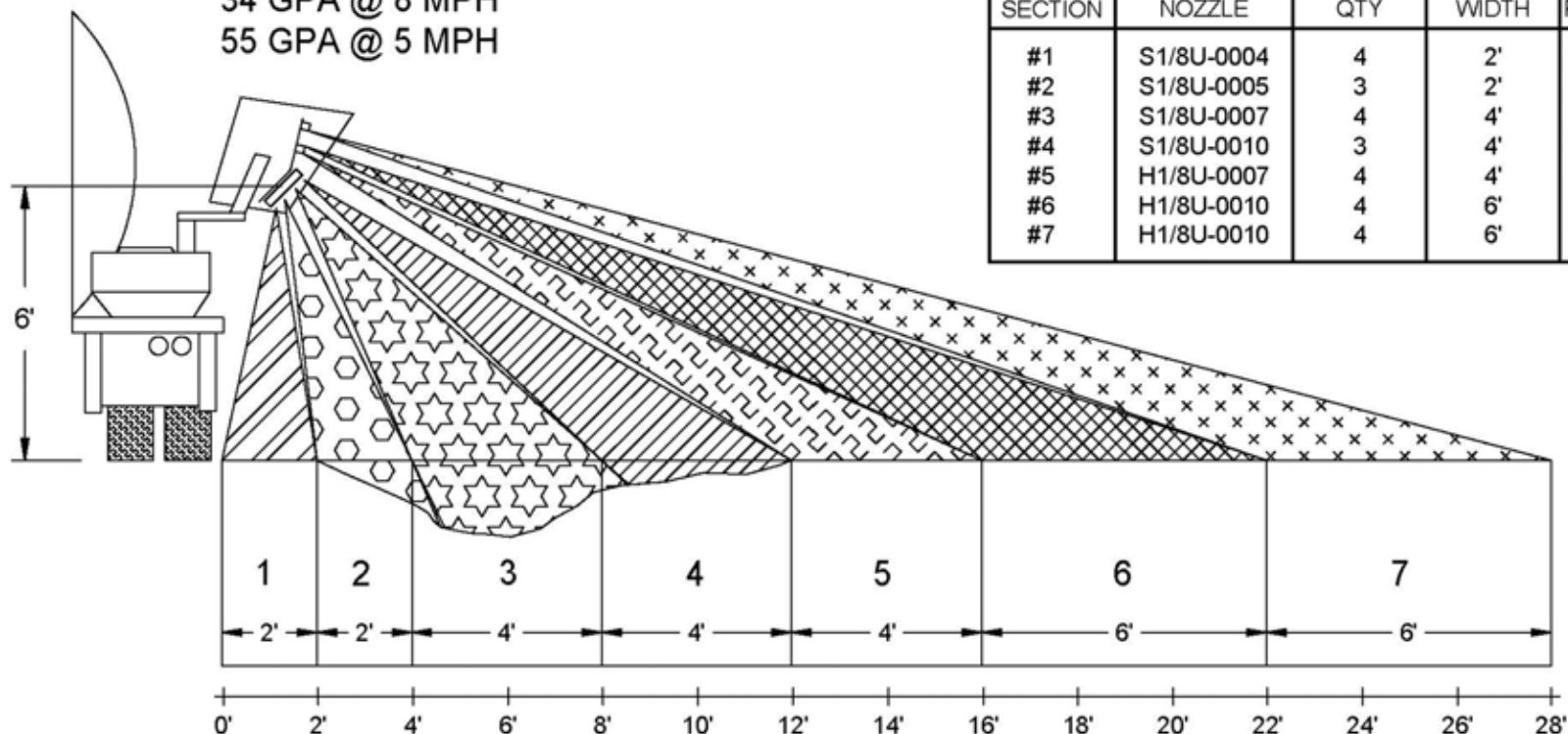


CAM C 35 GPA @ 11 MPH - 28' WIDTH				
SPRAY SECTION	NOZZLE	QTY	WIDTH	PRESSURE
#1	S1/8U-0006	4	2'	20 PSI
#2	S1/8U-0007	3	2'	20 PSI
#3	S1/8U-0011	4	4'	20 PSI
#4	S1/8U-0014	3	4'	20 PSI
#5	H1/8U-0010	4	4'	25 PSI
#6	H1/8U-0014	4	6'	25 PSI
#7	H1/8U-0014	4	6'	25 PSI

<b>NORSTAR</b> INDUSTRIES, INC.		2302 A St. S.E. Auburn, WA 98002		Tel: (253) 735-1881 Fax: (253) 735-2051	
TITLE: <b>35 GPA Nutating Sprayhead Pattern</b>					
DRAWN BY: <b>T. Bannwarth</b>		CHECKED BY:		SCALE: <b>1:45</b>	PAGE: <b>1/1</b>
DATE CREATED: <b>12/18/2001</b>		DRAWING NUMBER: <b>7-351128</b>		DATE REVISED:	

# NSC-20108-V2 NUTATING SPRAYHEAD SPRAY PATTERN

18 GPA @ 15 MPH  
25 GPA @ 11 MPH  
34 GPA @ 8 MPH  
55 GPA @ 5 MPH



**CAM C**  
**25 GPA @ 11 MPH - 28' WIDTH**

SPRAY SECTION	NOZZLE	QTY	WIDTH	PRESSURE
#1	S1/8U-0004	4	2'	20 PSI
#2	S1/8U-0005	3	2'	20 PSI
#3	S1/8U-0007	4	4'	20 PSI
#4	S1/8U-0010	3	4'	20 PSI
#5	H1/8U-0007	4	4'	25 PSI
#6	H1/8U-0010	4	6'	25 PSI
#7	H1/8U-0010	4	6'	25 PSI

**NORSTAR**  
INDUSTRIES, INC.

2302 A St. S.E.  
Auburn, WA 98002  
Tel: (253) 735-1881  
Fax: (253) 735-2051

TITLE:

**25 GPA Nutating Sprayhead Pattern**

DRAWN BY:

**T. Bannwarth**

CHECKED BY:

SCALE:

**1:45**

PAGE:

**1/1**

DATE CREATED:

**12/18/2001**

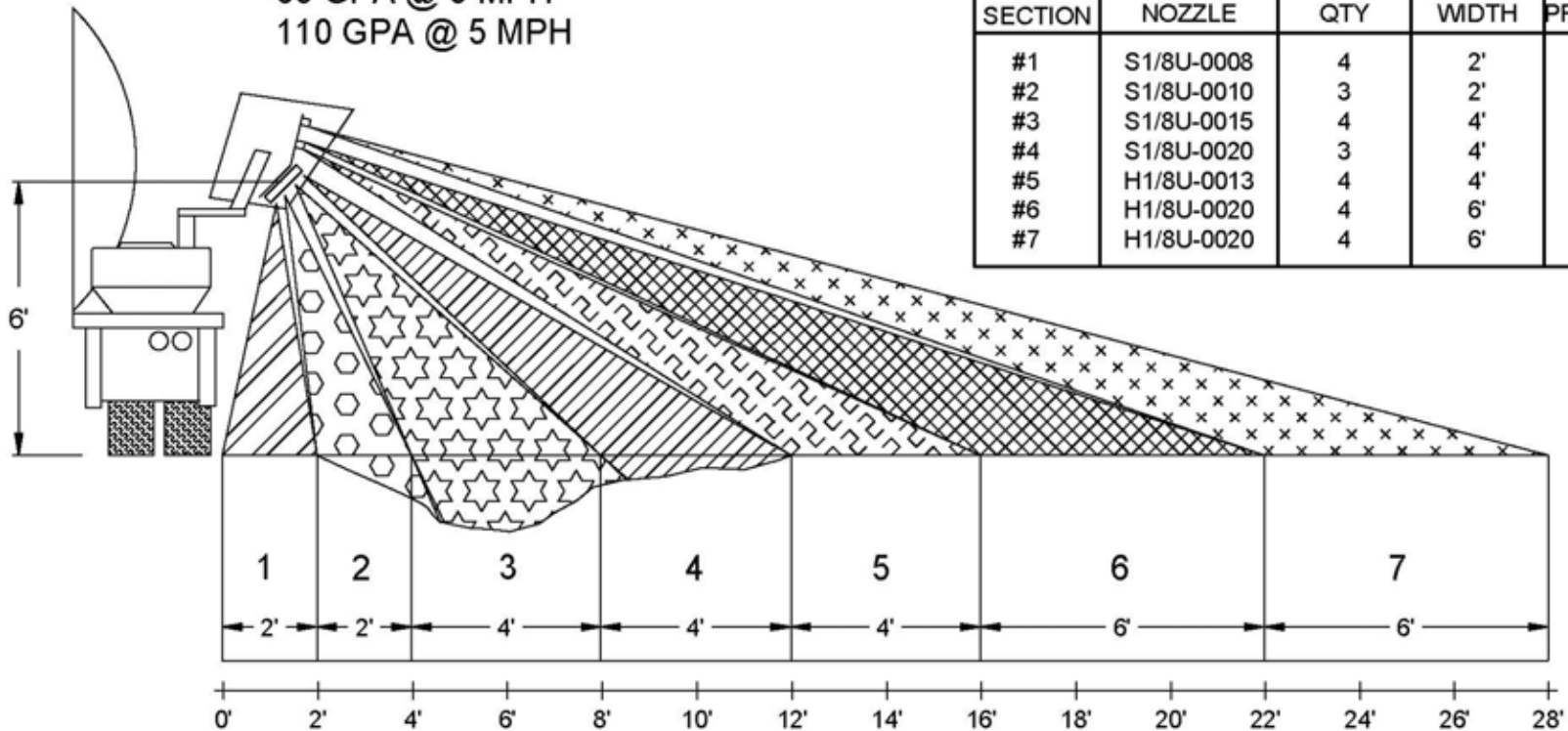
DRAWING NUMBER:

**7-251128**

DATE REVISED:

# NSC-20108-V2 NUTATING SPRAYHEAD SPRAY PATTERN

36 GPA @ 15 MPH  
50 GPA @ 11 MPH  
68 GPA @ 8 MPH  
110 GPA @ 5 MPH



CAM C 50 GPA @ 11 MPH - 28' WIDTH				
SPRAY SECTION	NOZZLE	QTY	WIDTH	PRESSURE
#1	S1/8U-0008	4	2'	20 PSI
#2	S1/8U-0010	3	2'	20 PSI
#3	S1/8U-0015	4	4'	20 PSI
#4	S1/8U-0020	3	4'	20 PSI
#5	H1/8U-0013	4	4'	25 PSI
#6	H1/8U-0020	4	6'	25 PSI
#7	H1/8U-0020	4	6'	25 PSI

<b>NORSTAR</b> INDUSTRIES, INC.		2302 A St. S.E. Auburn, WA 98002		Tel: (253) 735-1881 Fax: (253) 735-2051	
TITLE: <b>50 GPA Nutating Sprayhead Pattern</b>					
DRAWN BY: <b>T. Bannwarth</b>		CHECKED BY:		SCALE: <b>1:45</b>	PAGE: <b>1/1</b>
DATE CREATED: <b>12/19/2001</b>		DRAWING NUMBER: <b>7-501128</b>		DATE REVISED:	

### 35 GPA @ 11 MPH - 9' WIDTH

SPRAY SECTION	NOZZLE	QTY	WIDTH	PRESSURE
#8/#9	H1/4U-6520	4	9'	31 PSI

25 GPA @ 15 MPH

35 GPA @ 11 MPH

48 GPA @ 8 MPH

77 GPA @ 5 MPH

### 25 GPA @ 11 MPH - 9' WIDTH

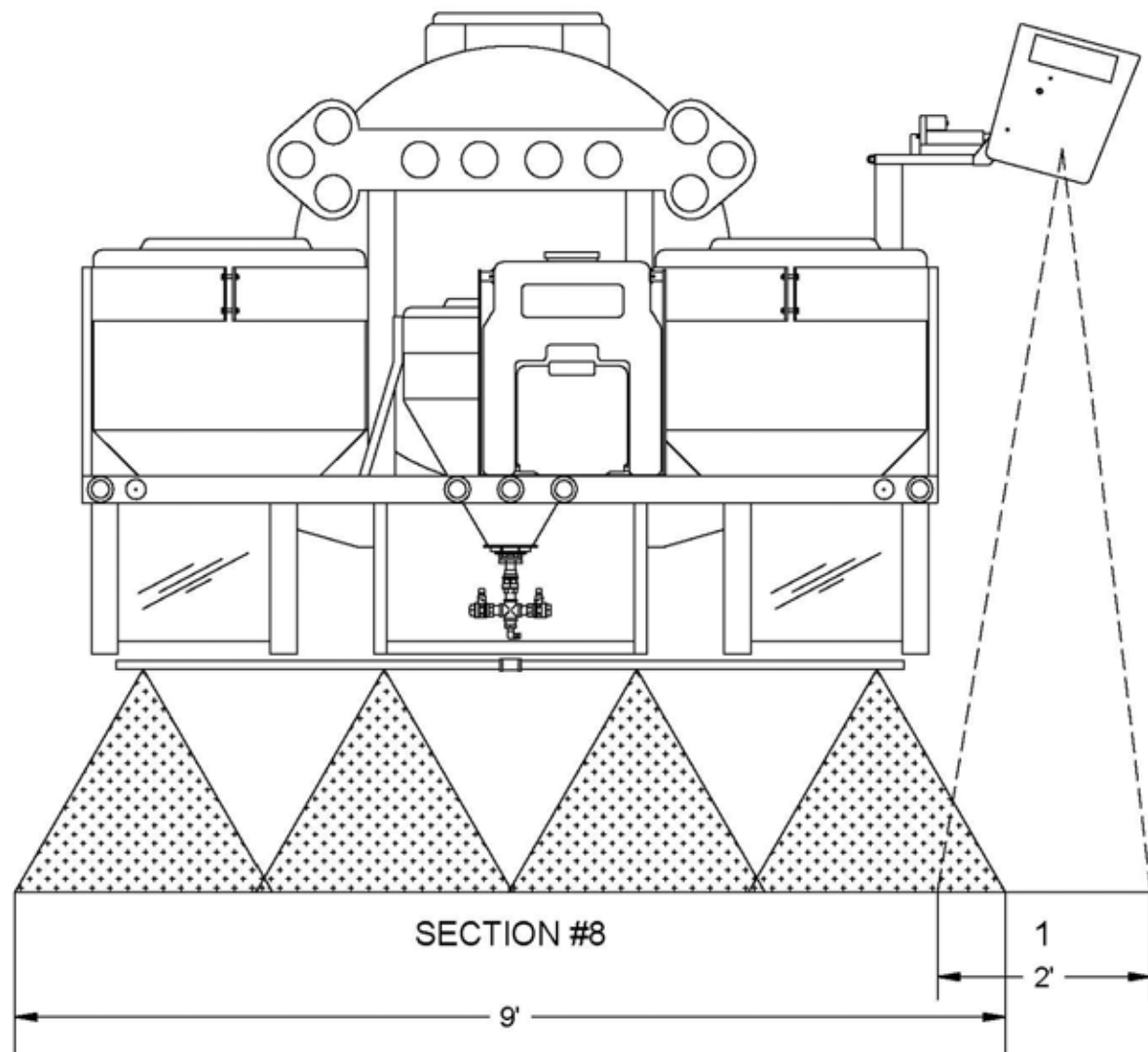
SPRAY SECTION	NOZZLE	QTY	WIDTH	PRESSURE
#8/#9	H1/4U-6515	4	9'	30 PSI

18 GPA @ 15 MPH

25 GPA @ 11 MPH

34 GPA @ 8 MPH

55 GPA @ 5 MPH



SECTION #8

9'

1

2'

**NORSTAR**  
 INDUSTRIES, INC.
2302 A St. S.E.  
Auburn, WA 98002Tel: (253) 735-1881  
Fax: (253) 735-2051

TITLE:

Rear Spray Bar Spray Pattern

DRAWN BY:

T. Bannwarth

CHECKED BY:

SCALE:

1:20

PAGE:

1/1

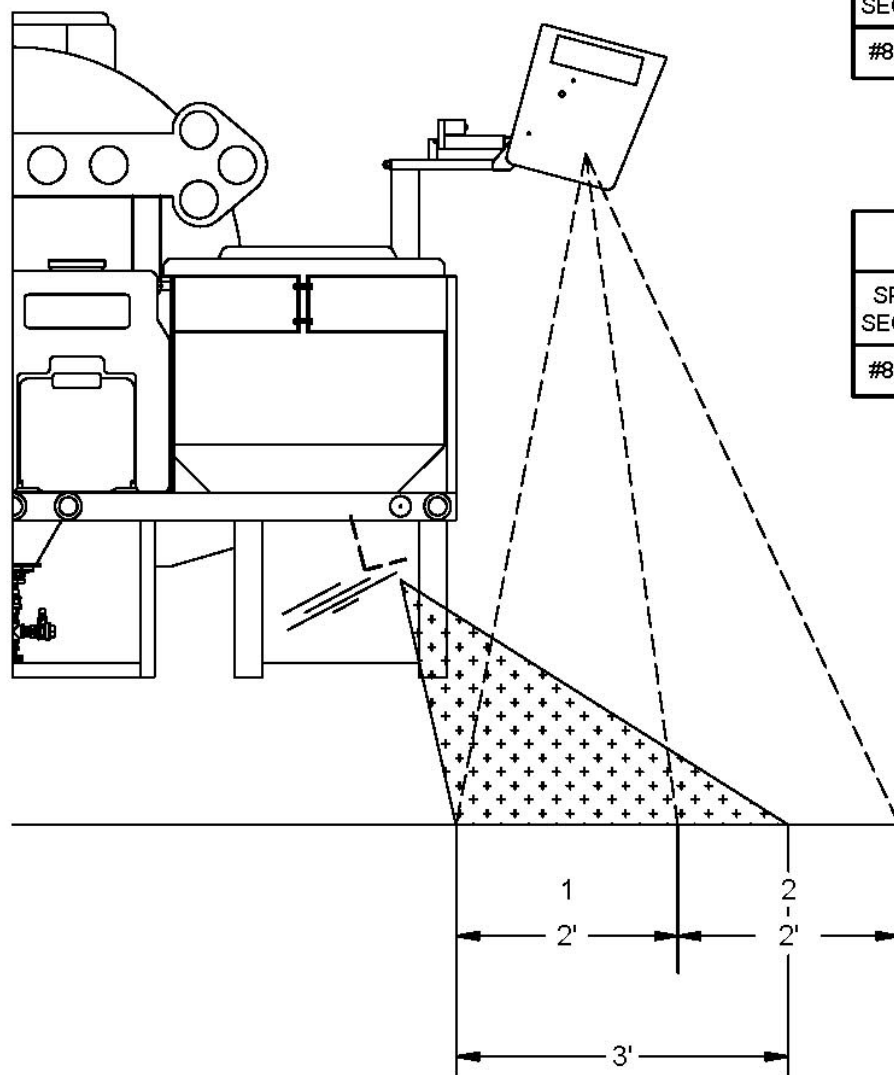
DATE CREATED:

05/21/2001

DRAWING NUMBER:

NSC-90500-PTRN

DATE REVISED:



Section #8  
or  
Section #9

35 GPA @ 11 MPH - 3' WIDTH

SPRAY SECTION	NOZZLE	QTY	WIDTH	PRESSURE
#8 or #9	H1/4U-5015	2	3'	25 PSI

25 GPA @ 15 MPH

35 GPA @ 11 MPH

48 GPA @ 8 MPH

77 GPA @ 5 MPH

25 GPA @ 11 MPH - 3' WIDTH

SPRAY SECTION	NOZZLE	QTY	WIDTH	PRESSURE
#8 or #9	H1/4U-5010	2	3'	30 PSI

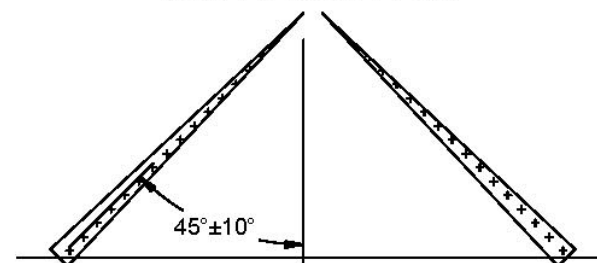
19 GPA @ 15 MPH

25 GPA @ 11 MPH

36 GPA @ 8 MPH

57 GPA @ 5 MPH

NOZZLE FRONT VIEW

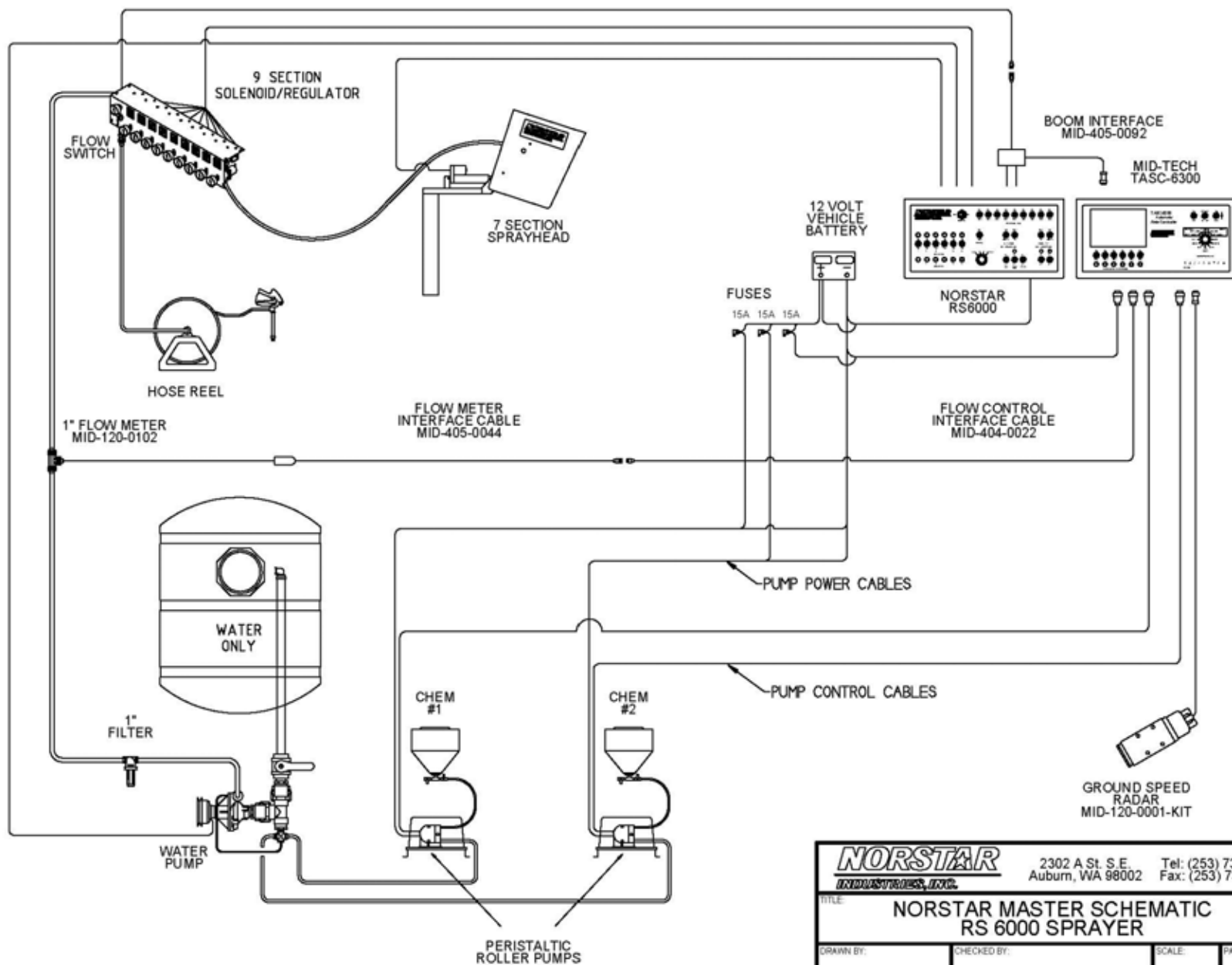


DIRECTION OF TRAVEL

**NORSTAR**  
INDUSTRIES, INC.

2302 A St. S.E. Tel: (253) 735-1881  
Auburn, WA 98002 Fax: (253) 735-2051

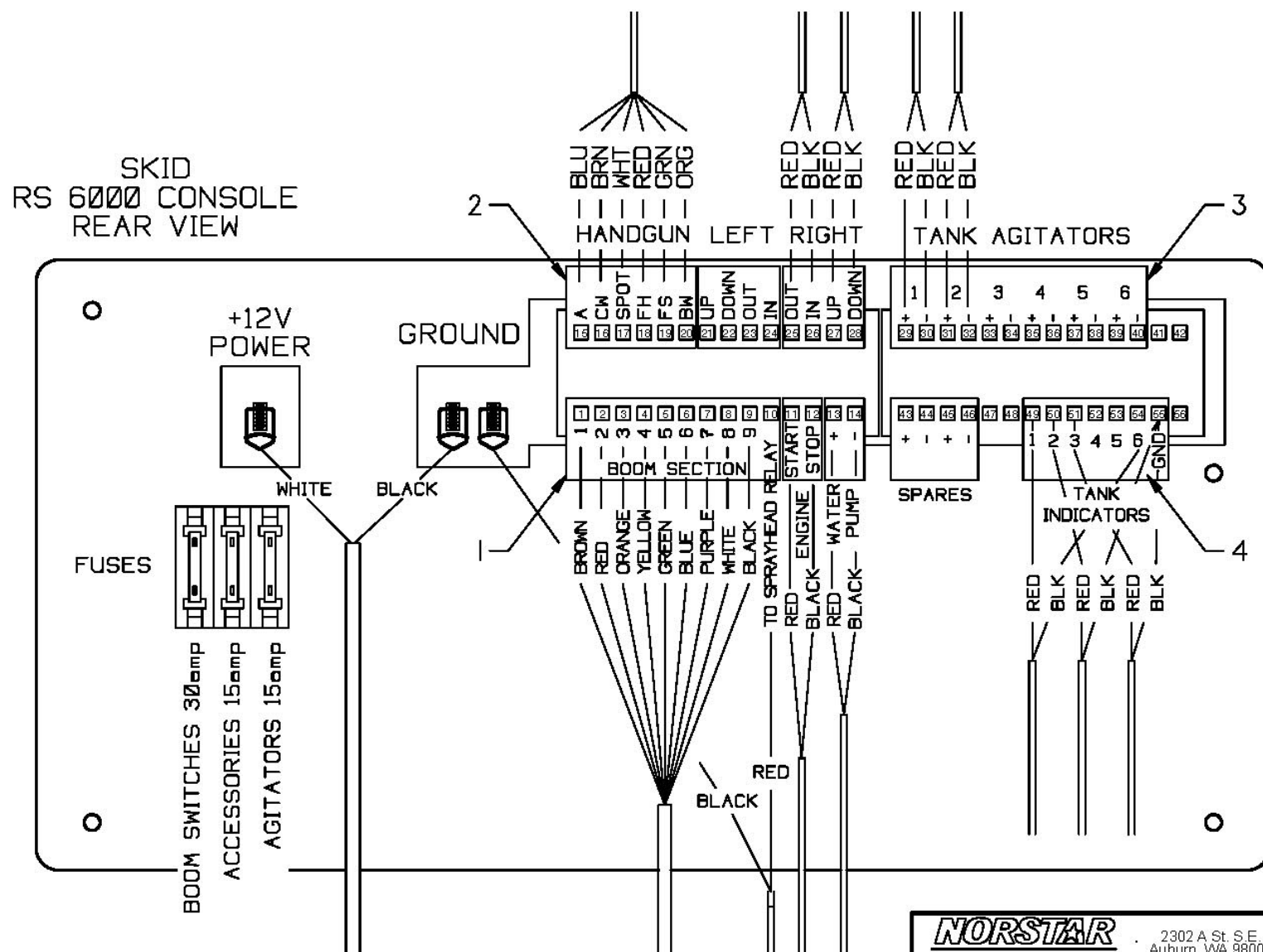
TITLE: Drop Nozzle Spray Pattern			
DRAWN BY: T. Bannwarth	CHECKED BY:	SCALE: 1:20	PAGE: 1/1
DATE CREATED: 05/21/2001	DRAWING NUMBER: NSC-20320-PTRN	DATE REVISED:	



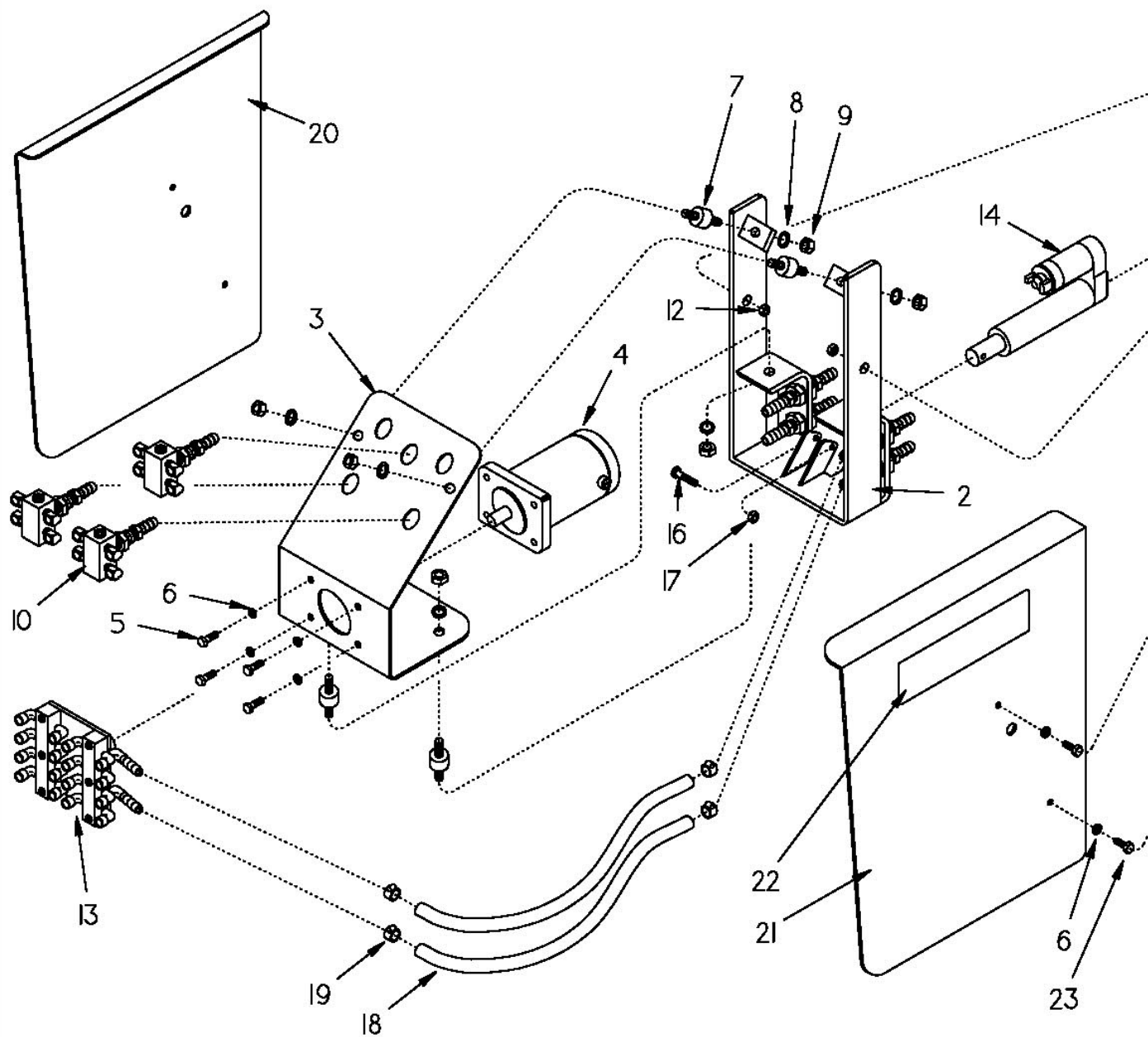
<b>NORSTAR</b> INDUSTRIES, INC.		2302 A St. S.E. Auburn, WA 98002	Tel: (253) 735-1881 Fax: (253) 735-2051
TITLE: <b>NORSTAR MASTER SCHEMATIC RS 6000 SPRAYER</b>			
DRAWN BY: <b>JFC</b>	CHECKED BY:	SCALE:	PAGE: <b>1/1</b>
DATE CREATED: <b>6/13/95</b>	DRAWING NUMBER: <b>6600-1</b>	DATE REVISED: <b>7/12/04</b>	

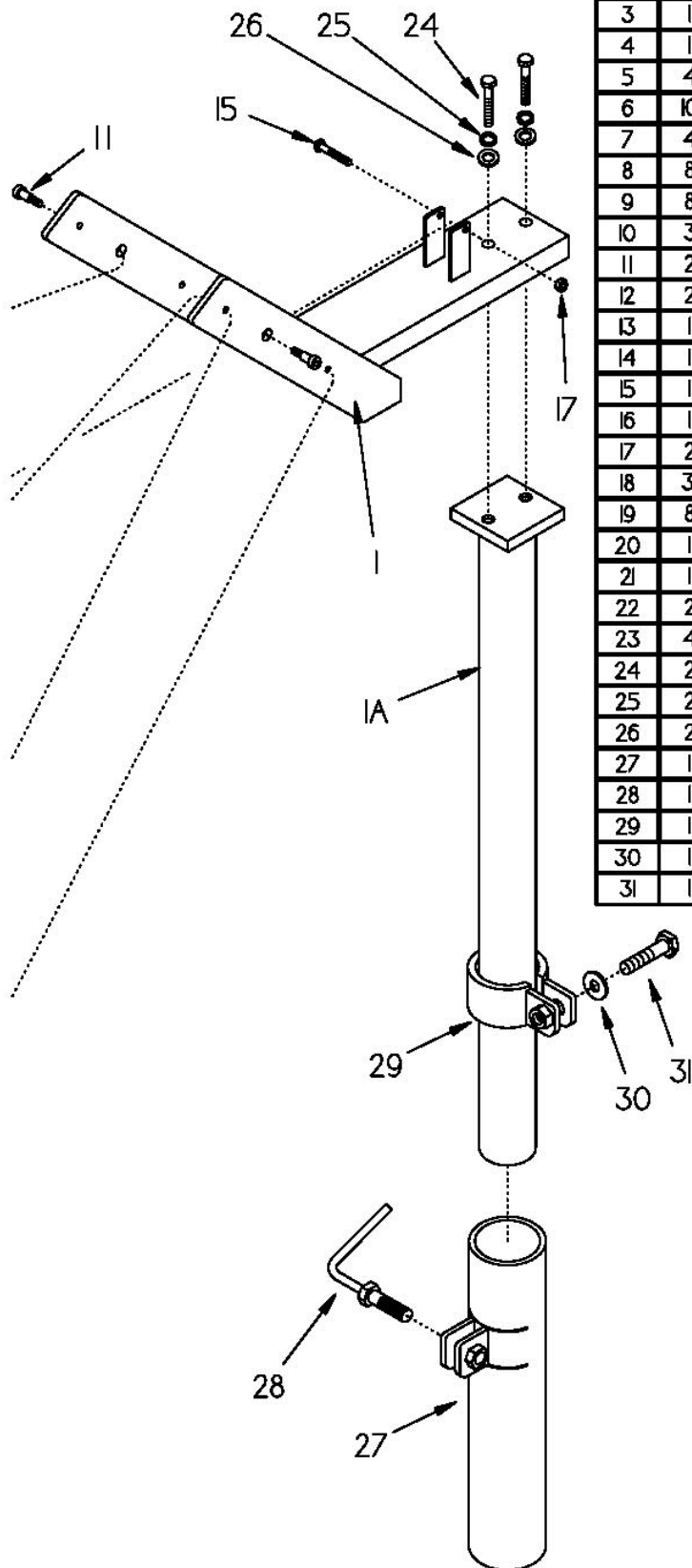












Item	Qty	Part Number	Description
1	1	FAB-2016	Sprayhead Mounting Weldment
1A	1	FAB-2016-1	Sprayhead Mounting Post
2	1	ASM-3102	Nutating Subframe Assembly
3	1	FAB-201	Nutating Motor Bracket
4	1	SPR-6160	Nutating Motor
5	4	FAS-SHC-1/4-20X3/4-S	Hex Cap Screw
6	10	FAS-WLO-1/4-S	1/4" Lock Washer
7	4	SPR-4754	Rubber Mount 5/16-18 UNC
8	8	FAS-WLO-5/16-S	5/16" Lock Washer
9	8	FAS-NSD-5/16-18-S	Hex Nut
10	3	ASM-3075	Upper Manifold Sub Assembly
11	2	FAS-SSX-3/8X1/2-S	Socket Head Shoulder Bolt
12	2	FAS-NTL-5/16-18-S	Toplock Nut
13	1	ASM-3080-V2	Nutating Plate Sub Assembly
14	1	SPR-6210	4" Linear Actuator
15	1	FAS-SHC-1/4-20X1-1/4-S	Hex Cap Screw
16	1	FAS-SHC-1/4-20X1-1/2-S	Hex Cap Screw
17	2	FAS-NYS-1/4-20-S	Nyloc Nut
18	3'	HSE-7230-06	Tygon Tubing
19	8	FAS-7655-04	Gear Clamp 1/4-5/8
20	1	FAB-2013	Left Head Cover
21	1	FAB-2014	Right Head Cover
22	2	SPR-9720	Norstar Decal
23	4	FAS-SHC-1/4-20X1/2-S	Hex Cap Screw
24	2	FAS-SHC-3/8-16X1 3/4-S	Hex Cap Screw
25	2	FAS-WLO-3/8-S	Lock Washer
26	2	FAS-WUS-3/8-S	USS Washer
27	1	FAB-2015	Sprayhead Mounting Socket
28	1	FAB-2141	Sprayhead Socket Handle
29	1	FAB-2007	Sprayhead Clamp
30	1	FAS-WUS-1/2-S	USS Washer
31	1	FAS-SHC-1/2-13X1 3/4-S	Hex Cap Screw

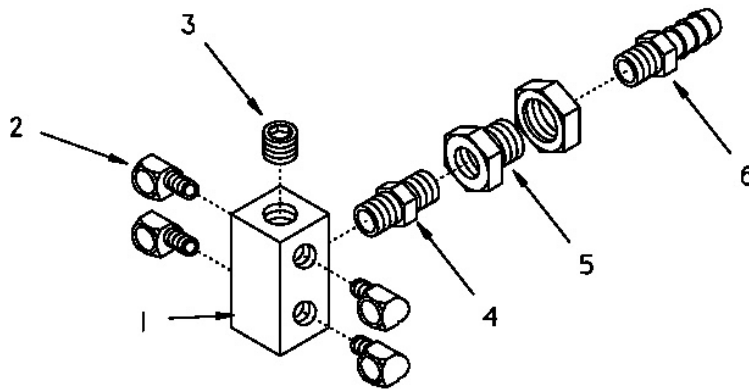
### NOTES:

1. Nozzle Set Sold Separately
2. Hose Kit to Solenoid regulator assembly not shown for clarity
3. Items #10 & #13 parts break down shown on following page.

<b>NORSTAR</b> INDUSTRIES, INC.		2302 A St. S.E. Auburn WA 98002	
TITLE <b>7 SECTION SPRAYHEAD</b>			
DRAWN BY: <b>J GOULET</b>		CHECKED BY:	SCALE: <b>1:8</b>
DATE CREATED: <b>12/12/02</b>		DRAWING NUMBER: <b>ASM-3117-V2</b>	PAGE: <b>1/1</b>
DATE REVISED:			

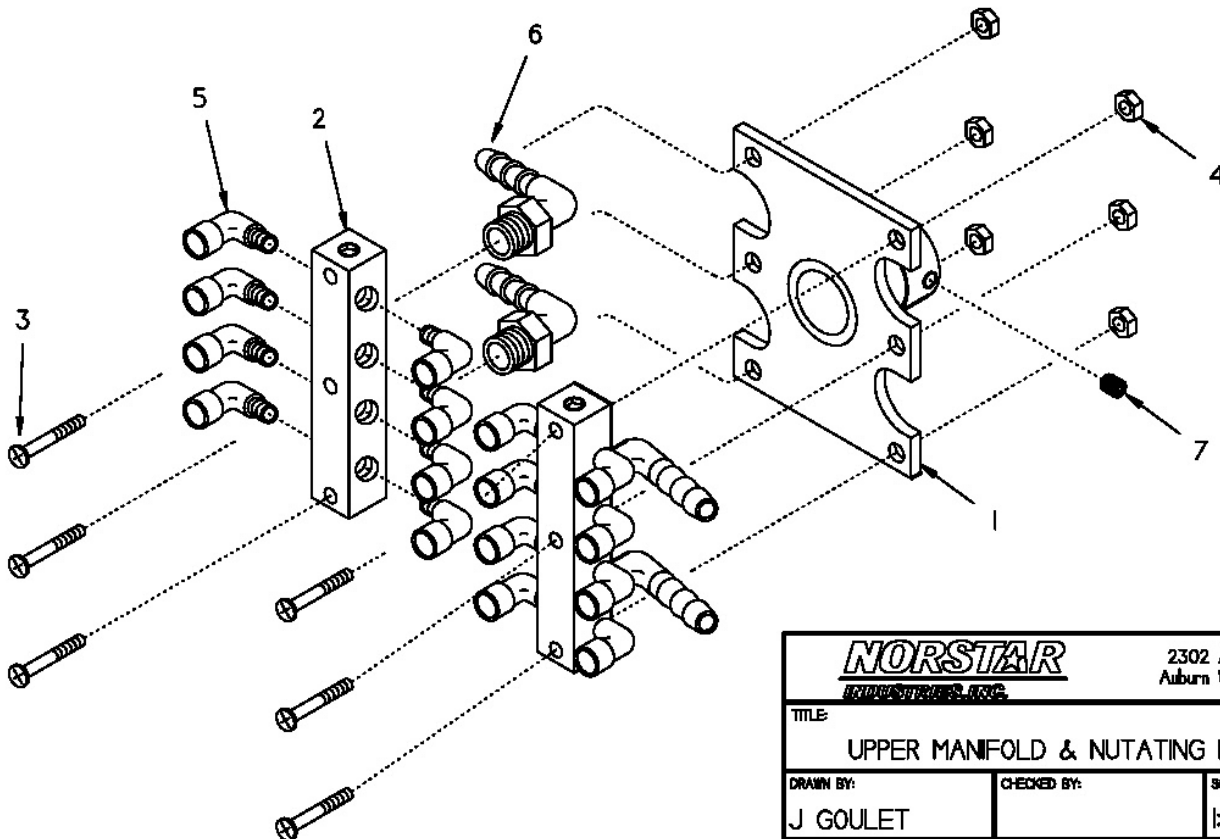
## UPPER MANIFOLD ASM-3075

Item	Qty	Part Number	Description
1	1	FAB-2265	Brass Nozzle Manifold
2	4	BRF-9SL-02P	1/8" 90° Street Elbow
3	1	BRF-HHP-06MP	3/8" Hollow Hex Plug
4	1	BRF-HXN-06MP	3/8" Hex Nipple
5	1	BRF-BHD-06FP	3/8" Bulkhead Fitting
6	1	BRF-SBR-08BX06MP	3/8" Male Pipe x 1/2" Hose Barb

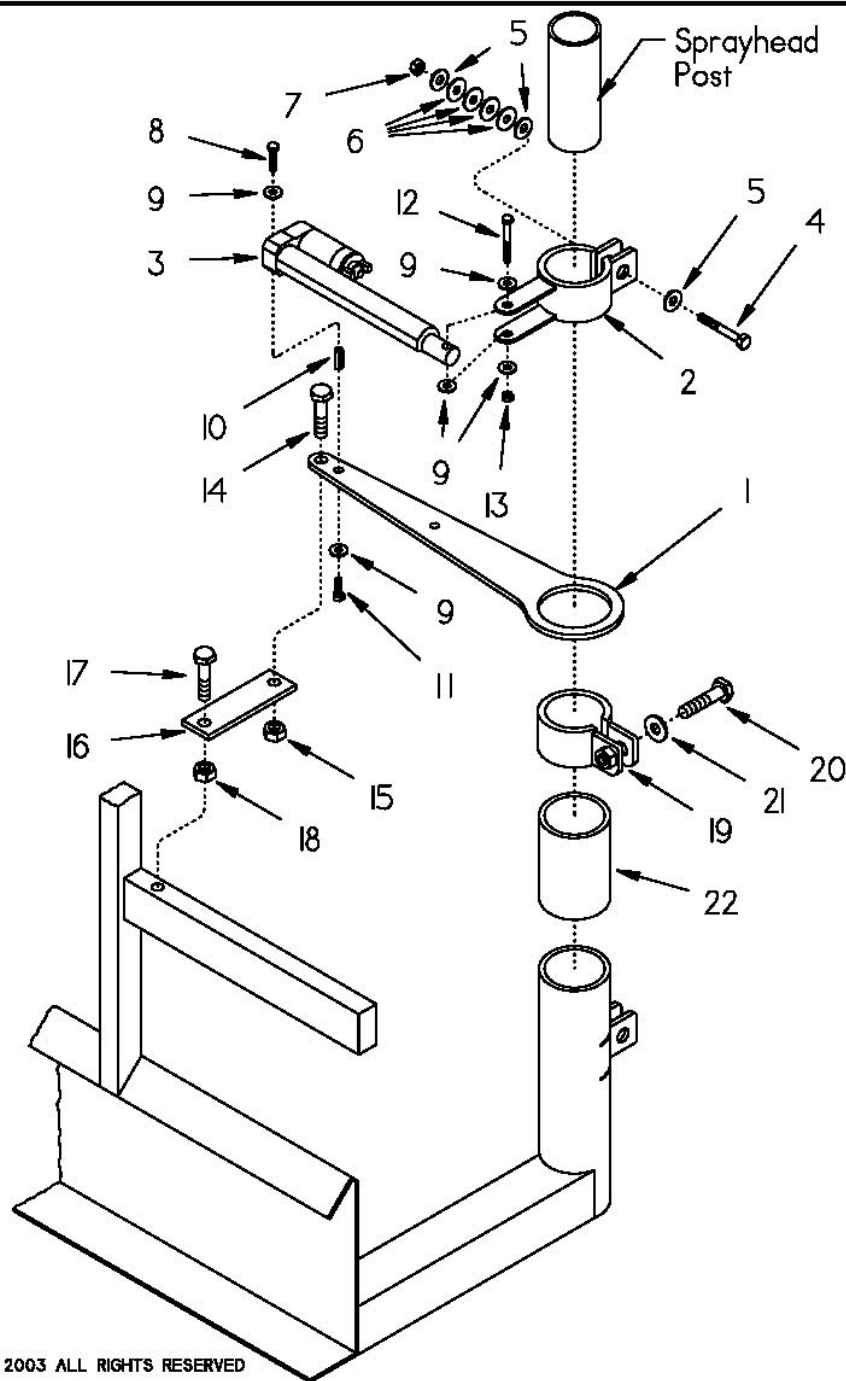


## NUTATING PLATE ASM-3080-V2

Item	Qty	Part Number	Description
1	1	ASM-3103	Nutating Bearing Cartridge Plate
2	2	FAB-2264	Nutating Head Manifold
3	6	FAS-SPP-10-32XI-1/4-SS	Stainless Panhead Philips Screw
4	6	BRF-HHP-02MP	1/8" Brass Hollow Hex Plug
5	16	SPR-4250	1/8" Nylon Street Elbow
6	4	SPR-4255	Elbow 3/8" barb x 1/4" MPT Nylon
7	1	FAS-SSS-1/4-20X.25-SS	Stainless Steel Set Screw

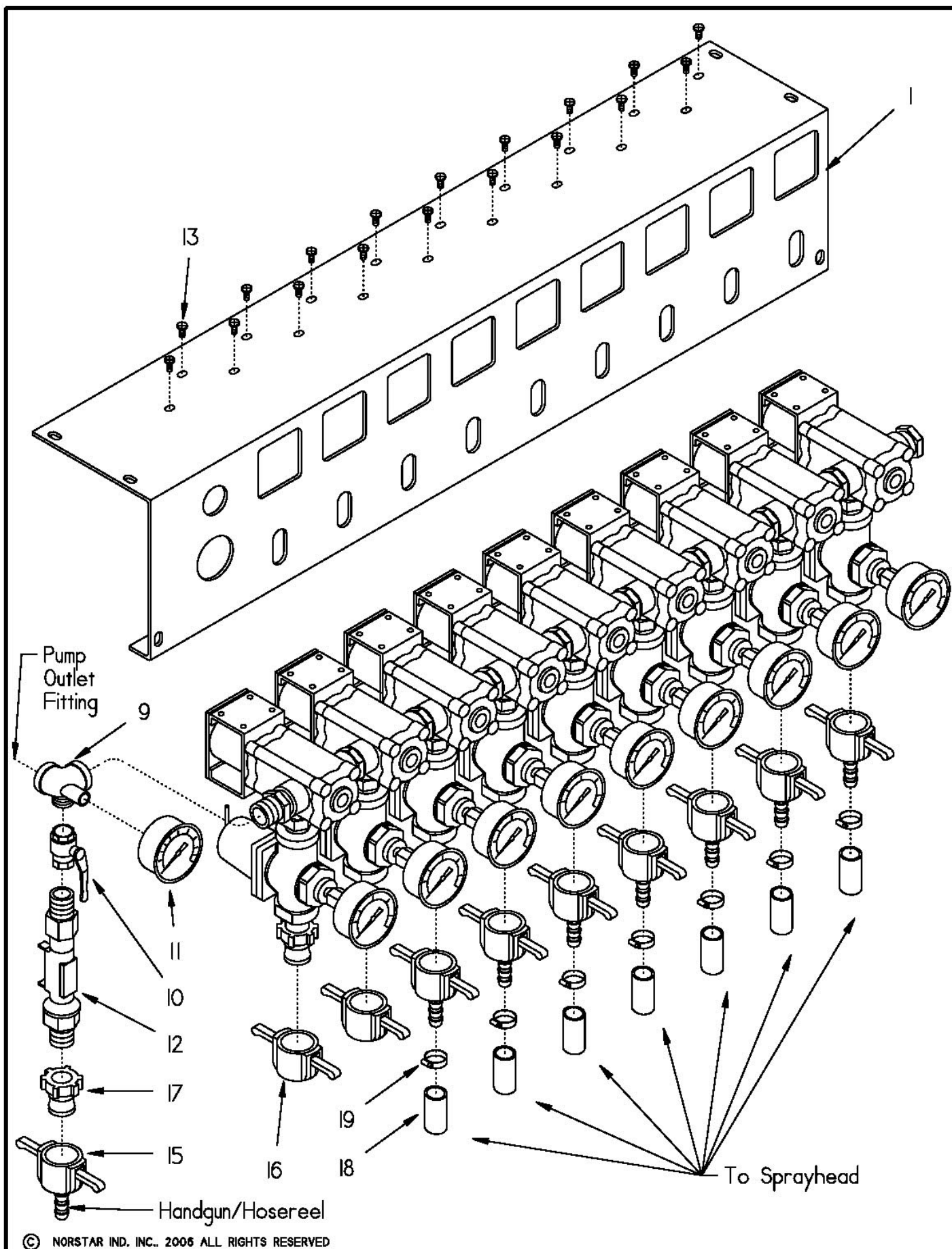


<b>NORSTAR</b> INDUSTRIAL		2302 A St. S.E. Auburn WA 98002	
TITLE <b>UPPER MANIFOLD &amp; NUTATING PLATE</b>			
DRAWN BY: <b>J GOULET</b>	CHECKED BY:	SCALE <b>1:3.25</b>	PAGE <b>3/3</b>
DATE CREATED: <b>12/12/02</b>	DRAWING NUMBER:	DATE REVISED:	



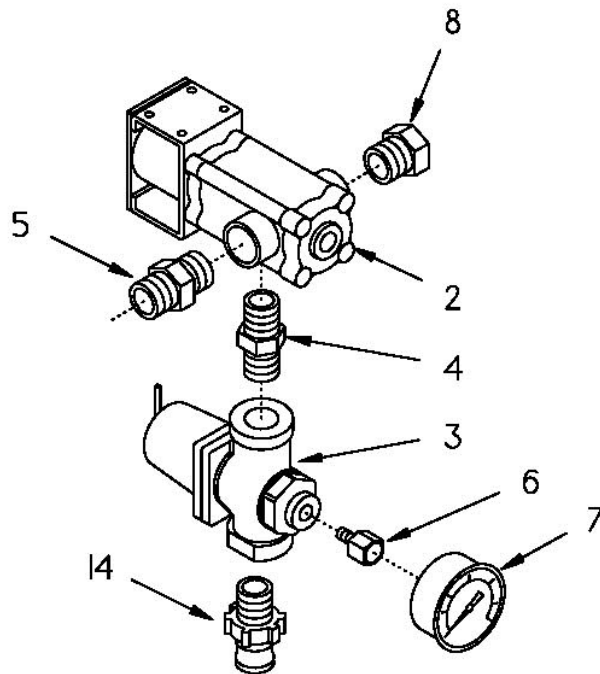
Item	Qty	Part Number	Description
1	1	FAB-2008	Fold Actuator Bracket
2	1	FAB-2009	Fold Actuator Clutch Band
3	1	SPR-621	6" Linear Actuator
4	1	FAS-SHC-3/8-16X2 1/2-S	Hex Cap Screw
5	3	FAS-WUS-3/8-S	USS Washer
6	4	FAS-WBV-3/8-S	3/8" Belleville Washer
7	1	FAS-NYS-3/8-16-S	Nyloc Nut
8	1	FAS-SHC-1/4-20X1-S	Hex Cap Screw
9	5	FAS-WUS-1/4-S	USS Washer
10	1	FAS-NHC-1/4-20X7/8	Hex Coupling Nut
11	1	FAS-SHC-1/4-20X3/4-S	Hex Cap Screw
12	1	FAS-SHC-1/4-20X2-S	Hex Cap Screw
13	1	FAS-NYS-1/4-20-S	Nyloc Nut
14	1	SHC-1/2-13X1-S	Hex Cap Screw
15	1	FAS-NTL-1/2-13-S	Toplock Nut
16	1	MFS-1/4X1 1/2	1/4" x 1 1/2" x 5" Flat Bar
17	1	FAS-SHC-1/2-13X1 3/4-S	Hex Cap Screw
18	1	FAS-NSD-1/2-13-S	Hex Nut
19	1	FAB-2007	Sprayhead Clamp
20	1	SHC-1/2-20X1 3/4-S	Hex Cap Screw
21	1	FAS-WUS-1/2-S	USS Washer
22	1	STL-PP-3-80	3" Sched. 80 Pipe x 4 7/8"

<b>NORSTAR</b> INDUSTRIAL PUMP		2302 A St. S.E. Auburn WA 98002	
TITLE: <b>SKID SPRAYHEAD FOLD ASSEMBLY</b>			
DRAWN BY: <b>J GOULET</b>	CHECKED BY:	SCALE: <b>1:9</b>	PAGE: <b>1/1</b>
DATE CREATED: <b>8/17/03</b>	DRAWING NUMBER: <b>ASM-3004</b>	DATE REVISED:	





Item	Qty	Part Number	Description
1	1	FAB-3037	9 Section Solenoid Bracket
2	9	SPS-AA144A-I-VI	144A Solenoid Valve
2A		SPS-AB144-I-VI-KIT	144A Solenoid Repair Kit (Not Shown)
3	9	SPR-5330	1/2" Pressure Regulator
3A		SPR-5332	Repair Kit (Not Shown)
3B		SPR-5333	Repair Kit (prior to 02/01/02)
4	9	BRF-HXN-08MP-SHORT	1/2" Brass Hex Nipple
5	9	PPF-HXN-I2MP-SHORT	3/4" Poly Hex Nipple
6	9	BRF-ADP-04FPX02MP	1/4" x 1/8" Brass Adapter
7	9	SPR-4827	Liquid Filled Pressure Gauge 0-60 PSI
8	1	PPF-HXP-I2MP	3/4" Poly Hex Plug
9	1	FAB-3029	Stainless Steel Inlet Fitting
10	1	LHA-BV08N	1/2" Ball Valve
11	1	SPR-4828	Liquid Filled Pressure Gauge 0-100 PSI
12	1	SPR-6520	Flow Sensor
13	18	FAS-SRP-10-24X3/8-SS	Stainless Steel Round Head Screw
14	9	PPF-MQD-08MP	1/2" Poly Male Quick Disconnect
15	8	PPF-FQD-08B	1/2" Poly Female Quick Disconnect
16	2	PPF-FQD-08X	1/2" Poly Quick Disconnect Cap
17	1	PPF-MQD-08FP	1/2" Poly Quick Disconnect
18	50'	HSE-7200-08	1/2" Bosflex Hose
19	14	FAS-7655-06	Hose Clamp (2 per length of hose)



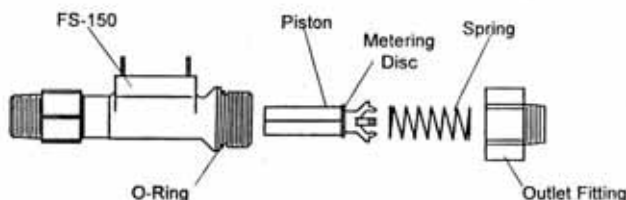
<b><i>NORSTAR</i></b> <small>HYDRAULIC PUMP &amp; SERVICE</small>		2302 A St. S.E. Auburn WA 98002	
TITLE: <b>SKID SOLENOID/REGULATOR ASSEMBLY</b>			
DRAWN BY: <b>J GOULET</b>	CHECKED BY:	SCALE: <b>1:5</b>	PAGE: <b>1/1</b>
DATE CREATED: <b>4/28/03</b>	DRAWING NUMBER: <b>ASM-3093-V3</b>	DATE REVISED:	

### Maintenance . . .

Any foreign particle accumulation is easily cleared by removing the outlet fitting and piston/spring assembly and then cleaning the bore.

**Caution:** During this cleaning operation, take care not to dislodge the metering disc or damage the spring.

During reassembly, remember to clean the O-Ring of any debris that may have accumulated. Reinstall piston first, then spring, then outlet port (hand-tight, **only**). 150 Micron filtration is suggested.



#### Important Points!

Product must be maintained and installed in strict accordance with the National Electrical Code and GEMS product catalog and instruction bulletin. Failure to observe this warning could result in serious injuries or damages.

An appropriate explosion-proof enclosure or intrinsically safe interface device must be used for hazardous area applications involving such things as (but not limited to) ignitable mixtures, combustible dust and flammable materials.

Pressure and temperature limitations shown on individual catalog pages and drawings for the specified flow switches must not be exceeded. These pressures and temperatures take into consideration possible system surge pressures/temperatures and their frequencies.

Selection of materials for compatibility with the media is critical to the life and

operation of GEMS flow switches. Take care in the proper selection of materials of construction; particularly wetted materials.

Life expectancy of switch contacts varies with applications. Contact GEMS if life cycle testing is required.

Ambient temperature changes do affect switch set points, since the specific gravity of a liquid can vary with temperature.

Flow switches have been designed to resist shock and vibration; however, shock and vibration should be minimized.

Liquid media containing particulate and/or debris should be filtered to ensure proper operation of GEMS products.

Electrical entries and mounting points may require liquid/vapor sealing if located in an enclosed tank.

Flow switches must not be field repaired.

Physical damage sustained by the product may render it unserviceable.



Gems Sensors Inc.  
One Cowles Road  
Plainville, CT  
06062 1198

tel 860.747.3000  
fax 860.747.4244

P/N 133690  
Rev. K



## In-Line Flow Switches FS-150 Series

Instruction Bulletin No. 133690

FS-150 Series Flow Switches operate reliably in any mounted attitude for which they are calibrated. Other attitudes will slightly alter actuation settings. Unless otherwise specified, units are calibrated in the horizontal position.

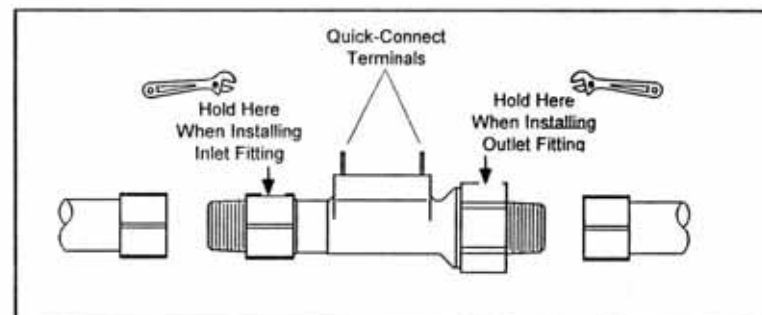
### - Installation -

#### - WARNING -

The FS-150 is a plastic, NPT-threaded instrument. Over-tightening will result in port breakage!

All plastic NPT threads should be installed using a suitable thread sealant. (Teflon tape or Permatex "No More Leaks"). Sealant must be kept out of unit during installation. **Always hold the FS-150 by the wrench flats adjacent to the port being connected during installation, to insure sealing of NPT and prevent port breakage. (See Diagram Below)**

The outlet port on the FS-150 is threaded hand-tight to the body and sealed via an O-Ring. **Improper installation to a process can result in torquing of the union and cracking.** Install fittings or adapters onto flow switch using strap wrenches. One to two turns past hand-tight is adequate. After installing unit, electrical connection is made to 1/4" quick-connect terminals with crimp-type receptacle, supplied by customer.



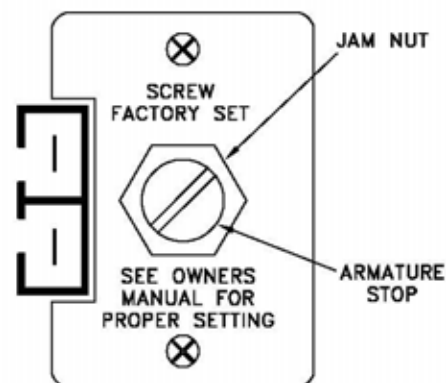
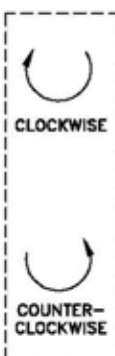
DIRECTIONS FOR ARMATURE STOP  
ADJUSTMENTS FOR SOLENOID  
OPERATED DIRECTOVALVE®  
CONTROL VALVES.

**144, 144H, 144A, 145, 145H, 146 VALVES**

- 1) UNSCREW JAM NUT BY TURNING IT COUNTER-CLOCKWISE.
- 2) SCREW THE ARMATURE STOP DOWN CLOCKWISE UNTIL SOLID CONTACT IS MADE WITH THE ARMATURE. THIS CAN BE NOTICED BY OBSERVING SLIGHT MOVEMENT OF THE LOWER DIAPHRAGM PISTON.
- 3) BACK OUT ARMATURE STOP BY TURNING COUNTER-CLOCKWISE. (SEE TABLE AT RIGHT FOR NUMBER OF TURNS).
- 4) LOCK JAM NUT IN PLACE BY TURNING IT CLOCKWISE, WHILE HOLDING ARMATURE STOP IN POSITION.
- 5) STROKE CAN BE CHECKED BY MEASURING THE TRAVEL OF THE LOWER DIAPHRAGM PISTON. (SEE TABLE FOR STROKE LENGTH)

**144-1-3, 144A-1-3, 144F-1-3 VALVES**

- 1) UNSCREW JAM NUT BY TURNING IT COUNTER-CLOCKWISE.
- 2) UNSCREW ARMATURE STOP BY TURNING IT COUNTER-CLOCKWISE UNTIL IT STOPS.
- 3) PUSH UP ON LOWER DIAPHRAGM PISTON, BY INSERTING NAIL PUNCH INTO HOLE IN BOTTOM HOLDER, UNTIL YOU FEEL THE SEAT WASHER MAKE CONTACT WITH THE BODY SEATING SURFACE. (SEE SHEET 2)
- 4) WHILE HOLDING THE LOWER DIAPHRAGM PISTON UP, TURN THE ARMATURE STOP CLOCKWISE UNTIL IT MAKES SOLID CONTACT WITH THE ARMATURE. (SEE SHEET 2)
- 5) BACK OUT ARMATURE STOP BY TURNING COUNTER-CLOCKWISE. (SEE TABLE AT RIGHT FOR NUMBER OF TURNS)
- 6) LOCK JAM NUT BY TURNING IT CLOCKWISE.



TYPICAL TOP VIEW OF 144, 144H, 144A, 144-1-3, 144A-1-3, 144F-1-3, 145, 145H AND 146 CONTROL VALVES.

VALVE No.	No. OF ARMATURE STOP TURNS	APPROX. STROKE LENGTH
144	2 1/2	1/8" (3.2 mm)
144H	1 1/2	5/64" (2 mm)
144A	2	7/64" (2.8 mm)
145	3 1/2	3/16" (4.8 mm)
145H	3	11/64" (4.4 mm)
146	5	1/4" (6.4 mm)
144-1-3	1/8	N/A
144A-1-3	1/8	N/A
144F-1-3	1/8	N/A

**NOTE: 1 TURN OF THE ARMATURE STOP IS EQUAL TO 360° OF ROTATION.**

**TOOLS NEEDED FOR ADJUSTMENT**

- 1) ADJUSTABLE WRENCH
- 2) FLAT HEAD SCREWDRIVER
- 3) NAIL PUNCH

**DESCRIPTION:**

ARMATURE STOP ADJUSTMENTS  
FOR SOLENOID OPERATED  
DIRECTOVALVE® CONTROL VALVES



**Spraying Systems Co.®**

Spray Nozzles and Accessories  
P.O. Box 7900 - Wheaton, IL 60189-7900

Rev. No. 1

Ref.

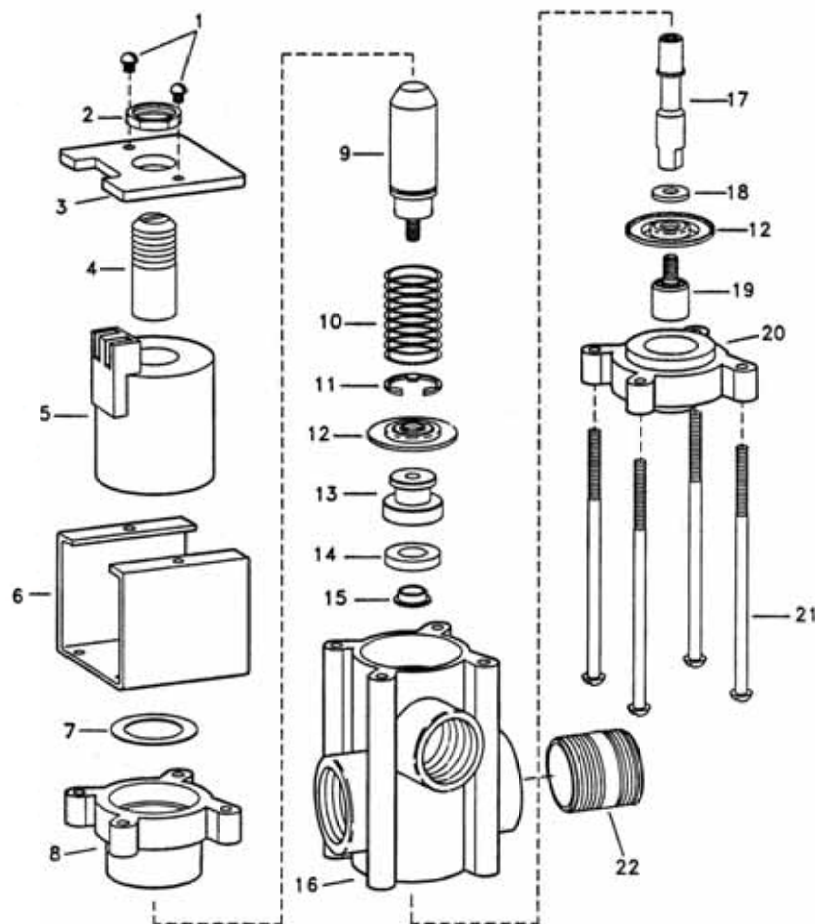
Data Sheet No.

38370

SHEET OF

ITEM	PART NO.	DESCRIPTION
1	CP14933-SS	Screw, Stainless Steel (2 Req'd)
2	CP15168-IENP	Jam Nut, Steel, Electroless Nickel Plated
3	CP15166-I	Coil Cover, Steel-Nitrotec Finish
4	CP15161-I	Armature Stop, Steel, Electroless Nickel Plated
5	CP15163-NYB	Coil Assembly, Nylon Encapsulated (Black)
6	CP14927-3-I	Strap, Steel-Nitrotec Finish
7	CP15169-302SS	Washer, Type 302 Stainless Steel
8	CP15164-NYB	Upper Diaphragm Housing, Nylon, Glass Filled (Black)
9	CP15170-IENP	Armature, Steel, Electroless Nickel Plated
10	CP15167-302SS	Spring, Type 302 Stainless Steel
11	CP14813-1-IENP	Retaining Ring, Steel, Electroless Nickel Plated
12	CP36101-EPR	Diaphragm, EPDM Rubber (Standard) 2 Req'd
**	CP36101-VI	Diaphragm, Viton (Optional) 2 Req'd
13	CP14807-SS	Seat Washer Retainer, Stainless Steel
*	CP14802-EPR	Seat Washer, EPDM Rubber (Standard)
**	CP14802-VI	Seat Washer, Viton (Optional)
15	CP14811-SS	Spacer, Stainless Steel
16	CP14801-PP	Body, Polypropylene (Black) (NPT) for AA144A-(-VI)
	CPB14801-PP	Body, Polypropylene (Black) (BSPT outlet) for AAB144A-(-VI)
17	CP14812-SS	Stem, Stainless Steel
18	CP14806-SS	Washer, Stainless Steel
19	CP15162-SS	Lower Diaphragm Piston, Stainless Steel
20	CP15165-NYB	Lower Diaphragm Housing, Glass Filled Nylon (Black)
21	CP14819-SS	Screw, Stainless Steel (4 Req'd)
22	CP21737-NYB	Connecting Nipple, Nylon (Black) Use only For Multiple Units
AA(B)144A-1, Single Unit DirectoValve (NPT or BSPT outlet)		
AA(B)144A-2, Two Unit DirectoValve (NPT or BSPT outlet)		
AA(B)144A-3, Three Unit DirectoValve (NPT or BSPT outlet)		
AA(B)144A-1-VI, Single Unit DirectoValve (NPT or BSPT outlet) w/ Viton option		
AA(B)144A-2-VI, Two Unit DirectoValve (NPT or BSPT outlet) w/ Viton option		
AA(B)144A-3-VI, Three Unit DirectoValve (NPT or BSPT outlet) w/ Viton option		
PK-AB144A-1-KIT - Spare Parts Kit (Includes One Set of Items Marked With *)		
PK-AB144A-1-VI-KIT - Spare Parts Kit (Includes One Set of Items Marked With **)		

(B) In part number specifies BSPT pipe thread outlet connection and NPT inlet connections



DESCRIPTION:  
AA(B)144A SOLENOID OPERATED  
DIRECTOVALVE® ASSEMBLY



**Spraying Systems Co.**

Spray Nozzles and Accessories  
P.O. Box 7900 - Wheaton, IL 60189-7900

Rev. No. 1

Ref.

Parts List No.  
**PL 144A**  
SHEET OF

### Servicing the Pressure Spring (4) and Diaphragm (7).

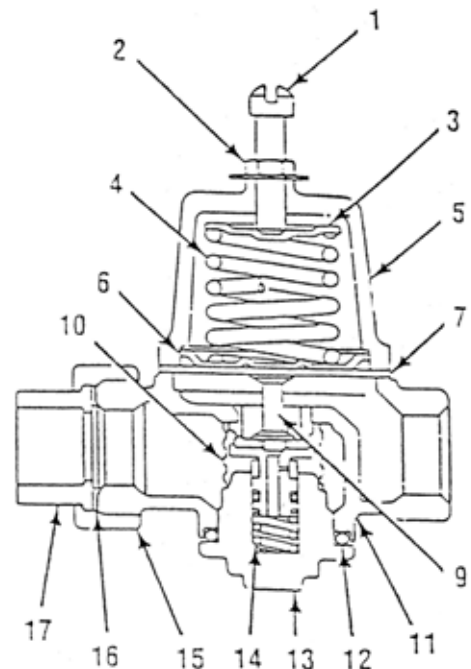
1. Loosen the lock nut (2) 1/2 turn and turn the adjusting screw (1) counter-clockwise until the pressure spring (4) is no longer under tension.

NOTE: When installing the adjusting screw during reassembly, turn the screw clockwise until the lock nut just touches the spring chamber. When the regulator is placed in service the pressure setting should be very close to the original setting.

2. Remove the four assembly screws securing the spring chamber (5) to the regulator body (11). During reassembly, tighten the screws evenly.
3. Lift the spring chamber (5) from the regulator body. Then remove the spring button (3), pressure spring (4), pressure plate (6) and diaphragm (7).
4. Inspect all parts and replace if necessary. Reassemble the regulator in reverse order. After placing the regulator in service, adjust the delivery pressure as outlined under the sprayhead nozzle pressure adjustment procedure (Section 3, pg. 15).

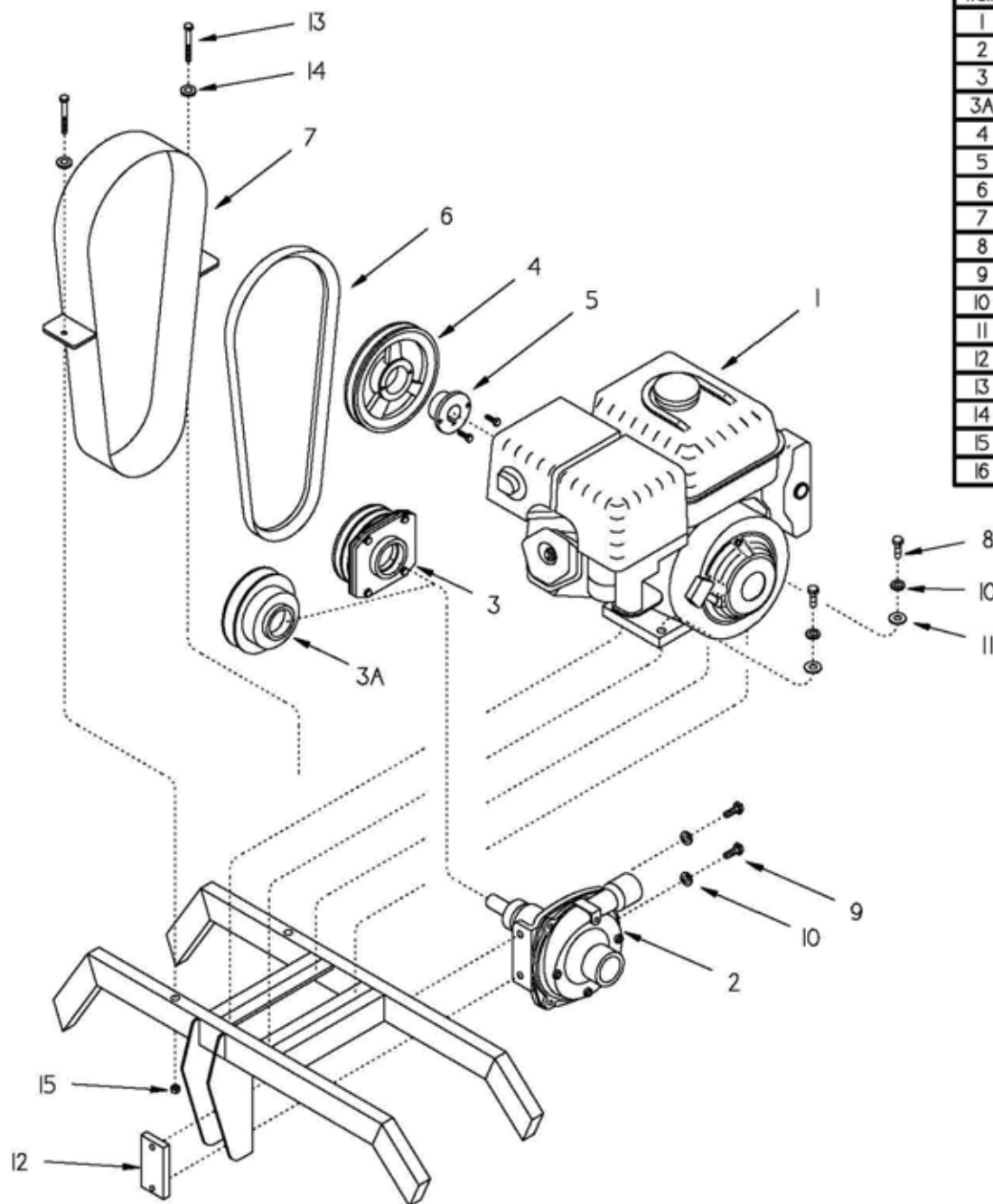
### Servicing the Strainer Screen (10), Piston Assembly (9), and Bottom Plug O-Ring (12).

1. Remove the pressure spring tension as described under Servicing the Pressure Spring (4), and Diaphragm (7) (above).
2. The bottom plug (13) is under slight tension as a result of the piston spring (14) acting against the plug. Loosen the bottom plug with a standard wrench, then carefully unscrew the plug by hand. The piston spring (14), piston assembly (9), and strainer screen (10) will drop out with the bottom plug when it is removed.
3. Remove the o-ring (12) from the bottom plug and replace if necessary. Also inspect the piston assembly, especially the composition seat disc. Replace any worn or damaged parts.
4. Thoroughly clean the strainer screen and flush the regulator body to remove any foreign material that may have collected around the strainer screen.
5. Reassemble the regulator in reverse order. After placing the regulator in service, adjust the delivery pressure as outlined under the sprayhead nozzle pressure adjustment procedure (Section 3, pg. 15).



- |                                |                        |
|--------------------------------|------------------------|
| 1. Adjusting Screw             | 9. Piston Assembly     |
| 2. Lock Nut                    | 10. Strainer Screen    |
| 3. Spring Button               | 11. Body               |
| 4. Pressure Spring             | 12. Bottom Plug O-Ring |
| 5. Spring Chamber              | 13. Bottom Plug        |
| 6. Pressure Plate              | 14. Piston Spring      |
| 7. Diaphragm                   | 15. Union Coupling Nut |
| 8. Assembly Screws (Not Shown) | 16. Union Gasket       |
|                                | 17. Union Tail Piece   |

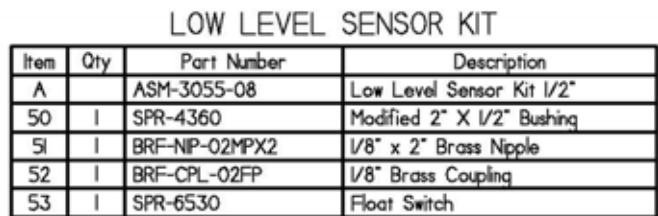




Item	Qty	Part Number	Description
1	1	SPR-8283	Honda Engine 9 HP
2	1	HYP-9203C	Hypro Pump
3	1	HYP-3430-0592	Electric Clutch/Flange Kit
3A	1	SPR-6610	Electric Clutch (Old Style)
4	1	SPR-4761	Pulley
5	1	SPR-4765	1" Split bushing
6	1	SPR-4767	V-Belt A42
7	1	FAB-3028	Belt Guard, Skid
8	4	FAS-SHC-3/8-16X1 1/4-S	3/8-16 x 1 1/4 Hex Cap Screw
9	2	FAS-SHC-3/8-16X1-S	3/8-16 x 1 Hex Cap Screw
10	6	FAS-WLO-3/8-S	3/8 Lock Washer
11	4	FAS-WUS-3/8-S	3/8 USS Washer
12	1	FAB-3046	Hypro Pump Tap Block - Skid
13	2	FAS-SHC-5/16-18X2 1/2-S	5/16-18 x 2 1/2 Hex Cap Screw
14	2	FAS-WUS-5/16-S	5/16 USS Washer
15	2	FAS-NYS-5/16-18-S	5/16-18 Nyloc Nut
16	1	SPR-8330	Hour Meter (Not Shown)

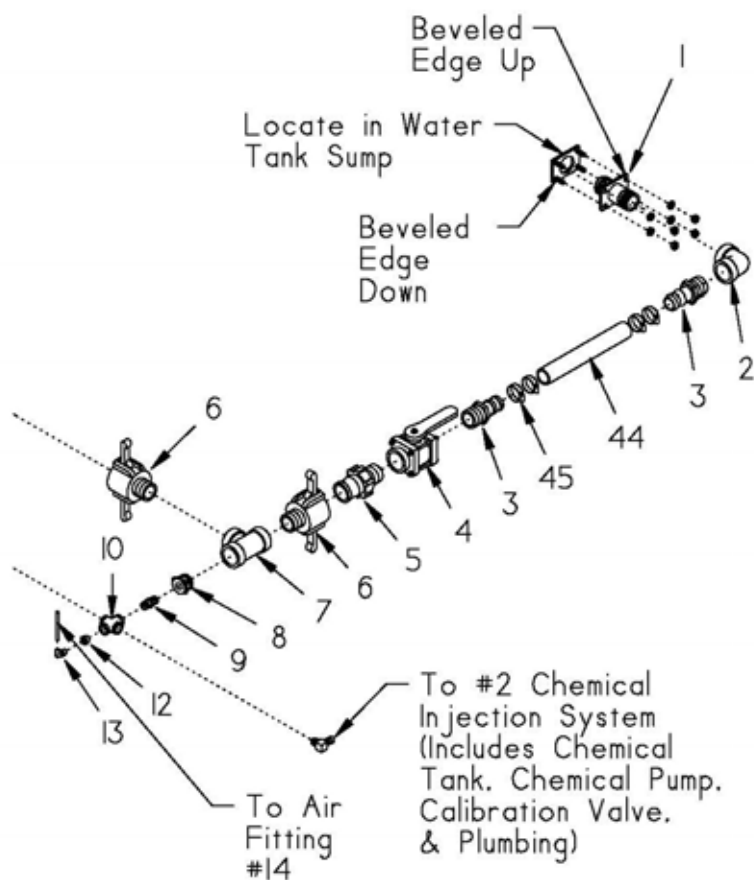
<b>NORSTAR</b> <small>INDUSTRIES, INC.</small>		2302 A St. S.E. Auburn WA 98002	
TITLE: INJECTION SKID HONDA ENGINE WATER PUMP			
DRAWN BY: J GOULET	CHECKED BY:	SCALE: H2	PAGE: 1/1
DATE CREATED: 3/2/04	DRAWING NUMBER:	DATE REVISED:	





Item	Qty	Part Number	Description
33A	2	MD-824-0403	90° Barb Fitting
33B	2	MD-824-0404	Nut
33C	2	MD-877-0031	Washer
33D	2	MD-824-0406	Hose Barb
33E	2	MD-824-0405	Swivel Nut
		HSE-7220-06	3/8" Prothane Tubing (Not Shown)
		SPR-8070	Tube Lube 1 Pint (Not Shown)



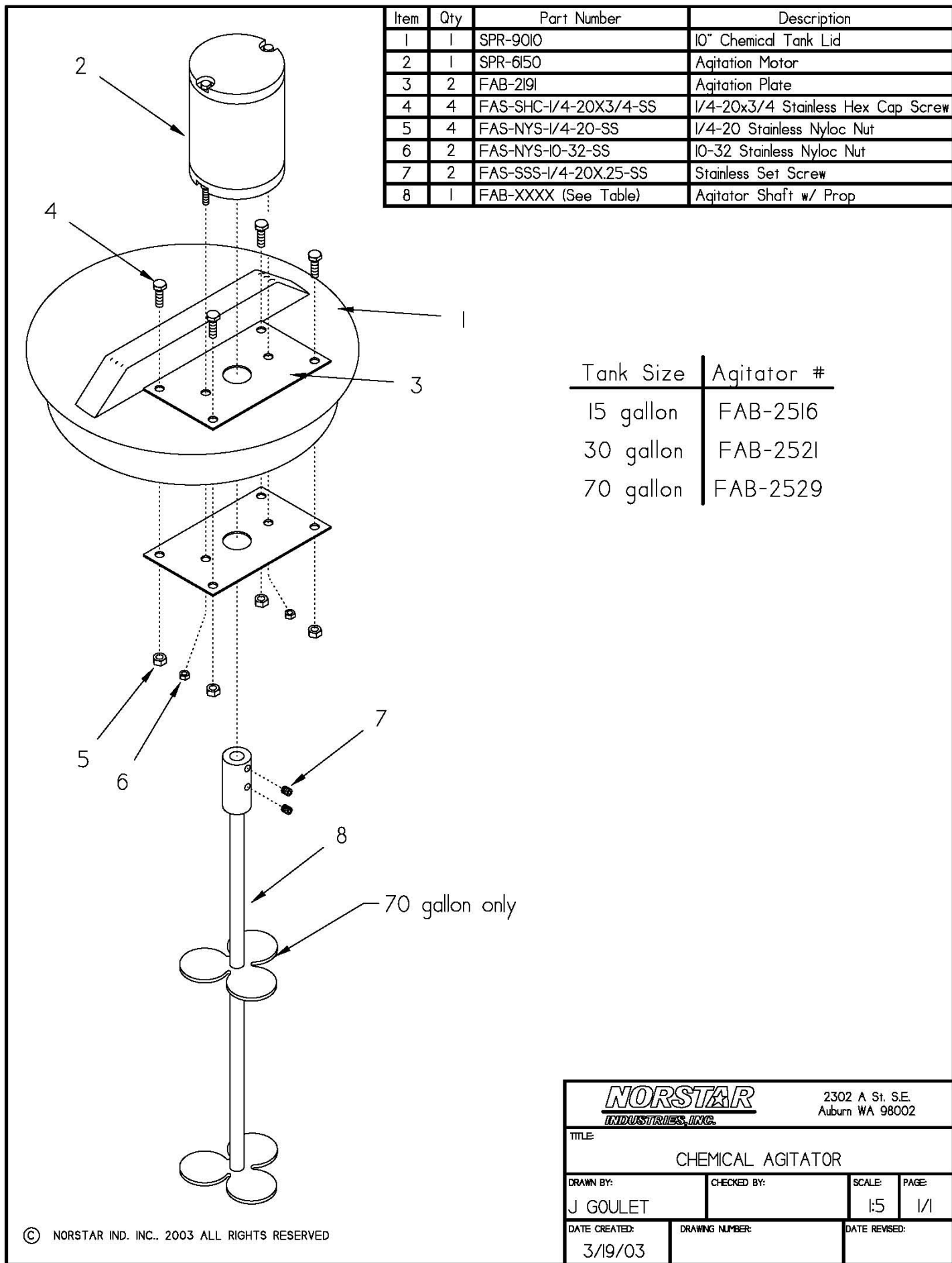


Item	Qty	Part Number	Description
1	1	ASM-324I	Skid Suction Bulkhead
2	1	PPF-9EL-24FP	1 1/2" Poly 90° Elbow
3	2	PPF-SBR-24BX24MP	1 1/2" Poly Hose Barb
4	1	PPF-V2B-24FP	1 1/2" Poly Ball Valve
5	2	PPF-MQD-24MP	1 1/2" Poly Male Camlock
6	2	PPF-FQD-24MP	1 1/2" Poly Female Camlock
7	1	PPF-TEE-24FP	1 1/2" Poly Tee
8	1	PPF-BSH-24MPX12FP	1 1/2" x 3/4" Poly Bushing
9	1	BRF-HXN-12MPX8MP	3/4" x 1/2" Brass Hex Nipple
10	3	BRF-CRS-08FP	1/2" Brass Cross
11	4	BRF-9BR-08BX08MP	1/2" Brass 90° Hose Barb
12	1	BRF-BSH-08MPX06FP	1/2" x 3/8" Brass Bushing
13	1	NHP-36946	1/4" x 3/8" 90° Air Fitting
14	1	NHP-36842	1/4" x 1/8" Str. Air Fitting
15	1	NHP-3925I	1/4" DOT Air Line
16	1	BRF-NP-02MP	1/4" Brass Nipple
17	1	BRF-TEE-02FP	1/4" Brass Tee
18	2	SPR-542I	1/8" Drain Cock
19	4	BRF-SBR-08BX08MP	1/2" Brass Hose Barb
20	2	PPF-V3U-08FP	1/2" Poly 3 Way Ball Valve
21	2	PPF-MQD-08MP	1/2" Poly Male Camlock
22	2	PPF-FQD-08X	1/2" Poly Camlock Cap
23	12	BRF-HXN-08MP-SHORT	1/2" Brass Hex Nipple
24	2	BRF-BHD-08FP	1/2" Brass Bulkhead
25	6	LHA-BV08N	1/2" Brass Ball Valve
26	2	BRF-HXP-08MP	1/2" Brass Hex Plug
27	2	BRF-9BR-12BX08MP	3/4" x 1/2" Brass 90° Barb
28	2	BRF-9EL-08FP	1/2" Brass 90° Elbow
29	2	PVF-BSH-32MPX8FP	2" x 1/2" PVC Bushing
30	2	PPF-BHD-32FP	2" Poly Bulkhead
31A/B	2	SPR-9030 or SPR-9070	30 or 70 gal Chemical Tank
32	2	SPR-9010	10" Chemical Tank Lid
33	2	MID-100-00II	150 Chemical Pump
34	1	BRF-NP-20MPX3	1 1/4" x 3" Brass Nipple
35	1	PPF-9EL-20FP	1 1/4" Poly 90° Elbow
36	1	PPF-MQD-20MP	1 1/4" Poly Male Camlock
37	1	PPF-FQD-20FP	1 1/4" Poly Female Camlock
38	1	PPF-SBR-16BX20MP	1" x 1 1/4" Brass Hose Barb
39	1	PPF-SBR-16BX16MP	1" Brass Hose Barb
40	1	SPS-AA124A-I-NYB-50	1" Strainer
40A	1	SPS-CPI6430-I-NYB	1" Strainer Head
40B	1	SPS-CPI6903-4-SS-PP	1" Screen 50 mesh
40C	1	SPS-CP7717-2-226 VI	1" Viton O-Ring
40D	1	SPS-CPI5403-NY	1" Strainer Bowl
41	1	PPF-9BR-16BX16MP	1" Brass 90° Hose Barb
42	1	BRF-SBR-16BX12MP	1" x 3/4" Brass Hose Barb
43	1	BRF-9SL-12P	3/4" Brass 90° Street Elbow
44	5'	HSE-7225-24	1 1/2" PVC Suction Hose
45	4	FAS-7655-24	1 1/2" Hose Clamps
46	18'	HSE-7200-08	1/2" Bosflex Hose
47	12	FAS-7655-06	3/8" Hose Clamps
48	8'	HSE-7211-16	1" Horizon Hose
49	6	FAS-7655-16	1" Hose Clamps

**NORSTAR**  
INDUSTRIES, INC.

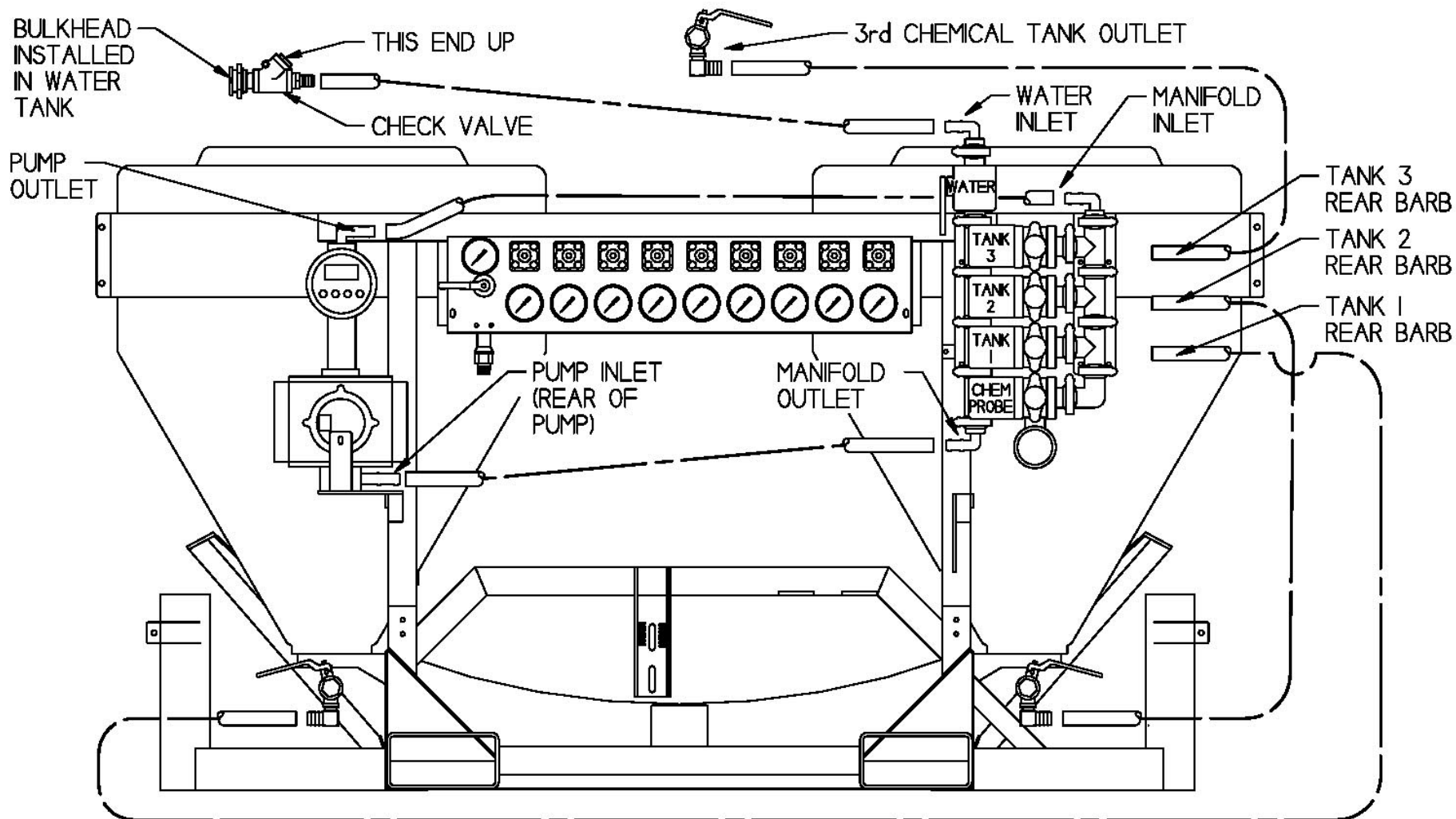
2302 A St. S.E.  
Auburn WA 98002

TITLE: <b>INJECTION SKID PLUMBING</b>			
DRAWN BY: <b>J GOULET</b>	CHECKED BY:	SCALE: <b>1:25</b>	PAGE: <b>1/1</b>
DATE CREATED: <b>6/15/03</b>	DRAWING NUMBER:	DATE REVISED:	



© NORSTAR IND. INC.. 2003 ALL RIGHTS RESERVED

<b>NORSTAR</b> INDUSTRIES, INC.		2302 A St. S.E. Auburn WA 98002	
TITLE: CHEMICAL AGITATOR			
DRAWN BY: J GOULET	CHECKED BY:	SCALE: 1:5	PAGE: 1/1
DATE CREATED: 3/19/03	DRAWING NUMBER:	DATE REVISED:	

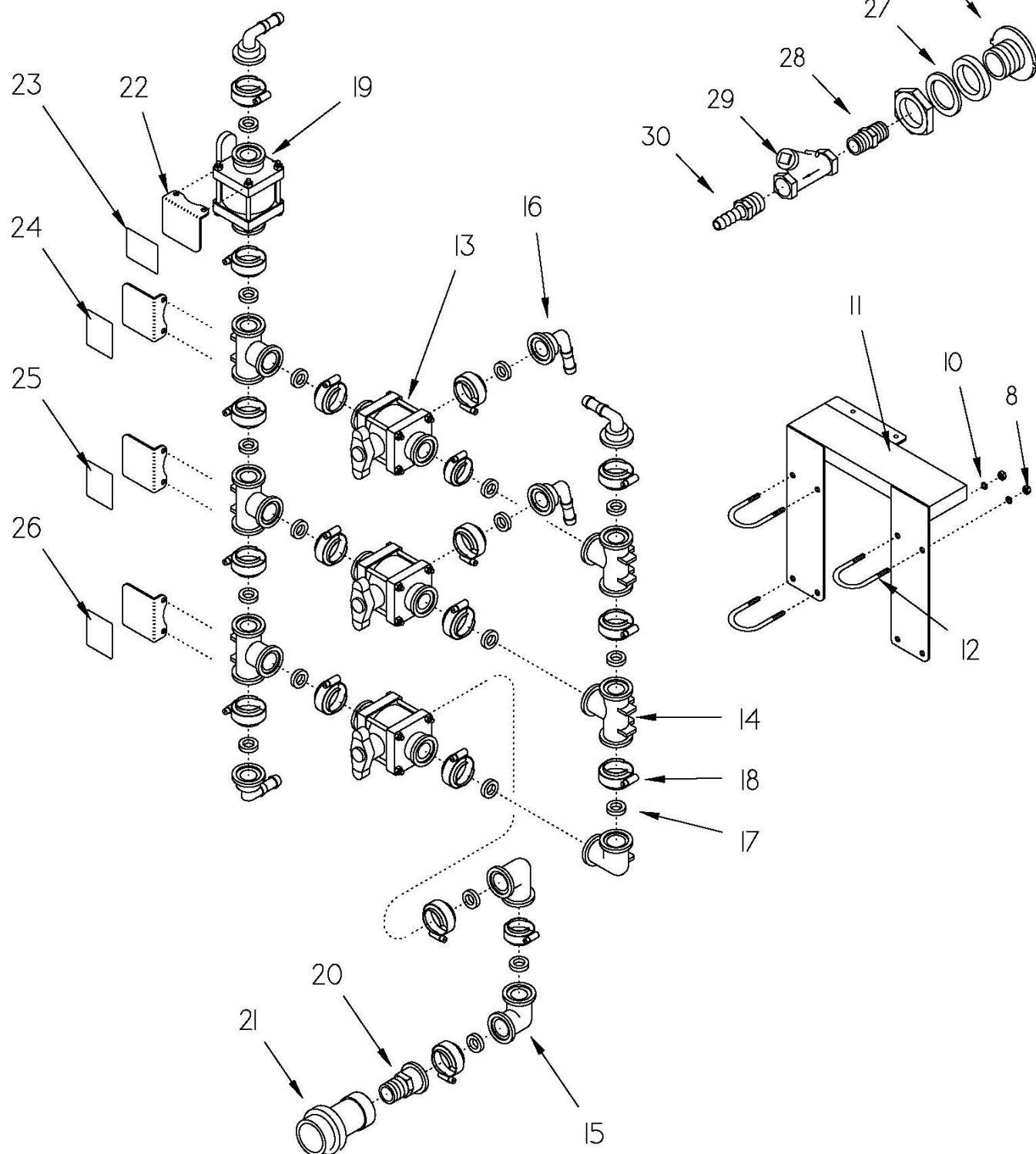


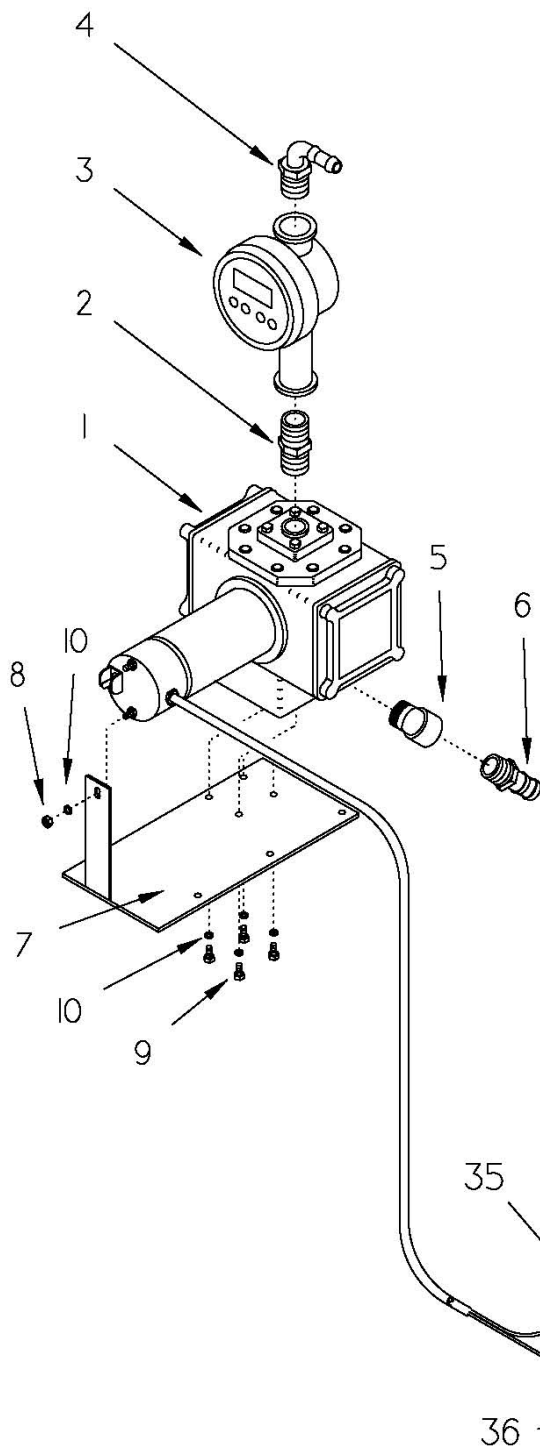
## NOTES:

1. HOSE ROUTING FOR ILLUSTRATION ONLY
2. STANDARD SKID 3 TANK CONFIGURATION

<b>NORSTAR</b> HYDRAULIC SKIDS		2302 A St. S.E. Auburn WA 98002	
TITLE: 3 TANK SKID CLOSED LOAD HOSE ROUTING			
DRAWN BY: J GOULET	CHECKED BY:	SCALE: 1:10	PAGE:
DATE CREATED: 8/7/03	DRAWING NUMBER:	DATE REWED:	

# Bulkhead Installed In Water Tank



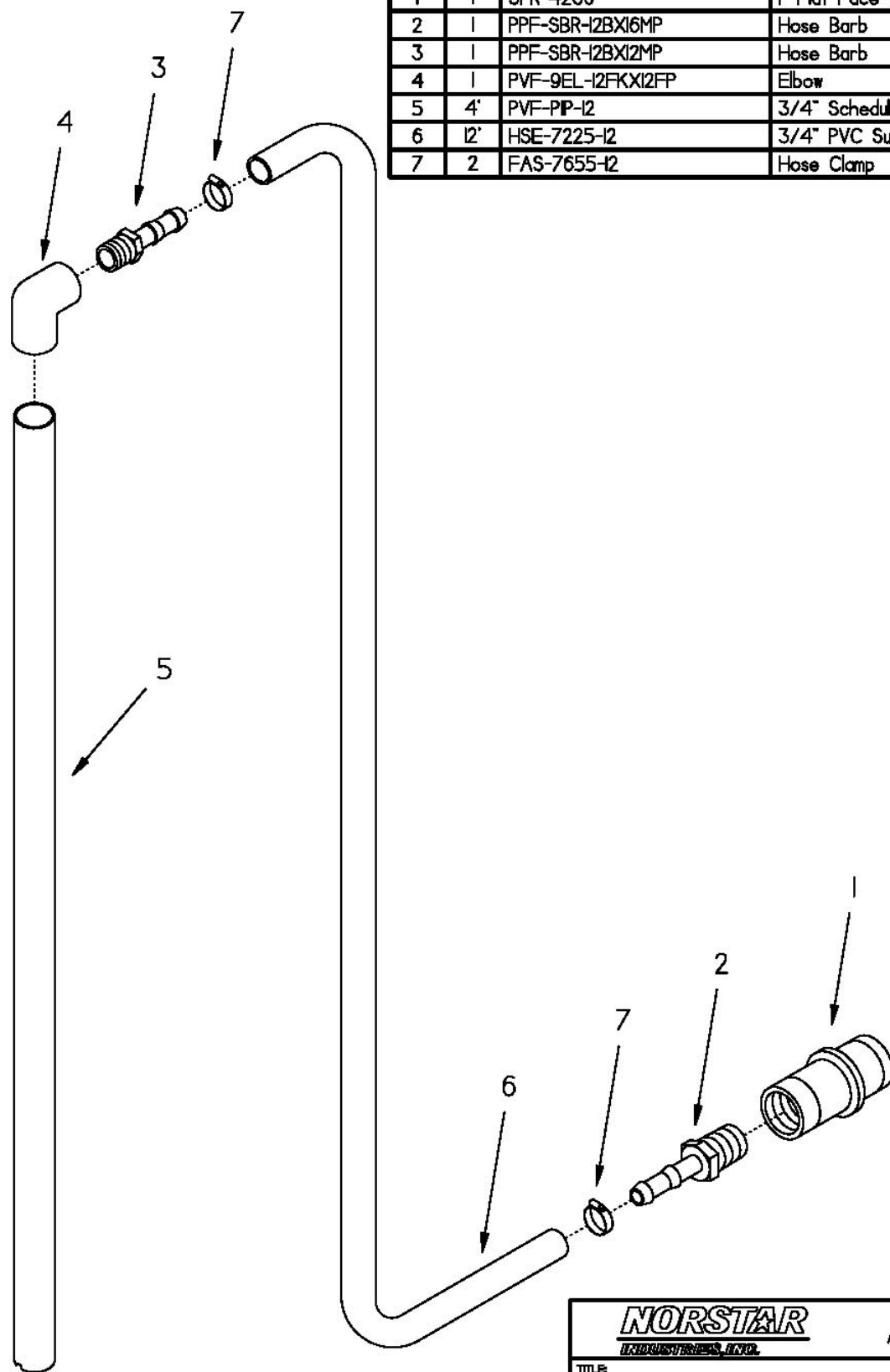


Item	Qty	Part Number	Description
1	1	SPR-5615	Sotera Model 415 Pump
2	1	PPF-HXN-16MP	1" MPT Hex Nipple
3	1	SPR-6560	Sotera Digital Flow Meter
4	1	PPF-9BR-12BX16MP	3/4" x 1" 90° Hose Barb
5	1	PPF-4SL-16MPX16FP	1" 45° Street Elbow
6	1	PPF-SBR-12BX16MP	3/4" x 3/4" Hose Barb
7	1	FAB-2280	Sotera Pump Mounting Bracket
8	7	FAS-NSD-1/4-20-S	1/4-20 Hex Nut
9	4	FAS-SHC-1/4-20X1/2-S	1/4-20 x 1/2" Hex Cap Screw
10	11	FAS-WLO-1/4-S	1/4" Lock Washer
11	1	FAB-2282	Skid Manifold Bracket
12	4	FAS-UBT-20	U-Bolt
13	3	PPF-V3B-16FL	3 way bottom loading poly valve
14	5	PPF-TEE-16FL	1" Flanged Tee
15	3	PPF-9EL-16FL	1" Flanged 90° Elbow
16	5	PPF-9BR-16FLX12B	1" Flange x 3/4" 90° Barb
17	19	PPF-BJO-16-GASKET	1" Flange Viton Gasket
18	19	PPF-BJO-16-CLAMP	1" Flange Screw Clamp
19	1	PPF-V2B-16FL	1" Flanged Poly Ball Valve
20	1	PPF-ADP-16FLX16MP	1" Flange x 1" Male Pipe Adapter
21	1	SPR-4207	1" Flat Face Female QD - Poly
22	4	FAB-2283	Manifold Label Bracket
23	1	SPR-9704	Fresh Water Label
24	1	SPR-9700	Chemical Tank 1 Label
25	1	SPR-9701	Chemical Tank 2 Label
26	1	SPR-9703	Chemical Probe Label
27	1	PPF-BHD-12FP	3/4" Poly Bulkhead
28	1	BRF-HXN-12MP	3/4" Hex Nipple
29	1	SPR-5412	3/4" Inline Check Valve
30	1	BRF-SBR-12BX12MP	3/4" Straight Barb
31	1	SPR-9703	Fuse Holder
32	1	SPR-9703	Fuse Holder Cap
33	2	SPR-6082	Fuse Holder Terminal
34	1	ELE-ATO-30	30 Amp ATO Blade Style Fuse
35	1	FAS-SHC-10X1/2-ST-S	Hex Sheet Metal Screw
36	2	ELC-2100-12-10-5/16-I	Insulated Ring Terminal
	25'	HSE-7225-12	3/4" PVC Suction Hose
	12	FAS-7655-10	3/4" Gear Clamp

# NOTE:

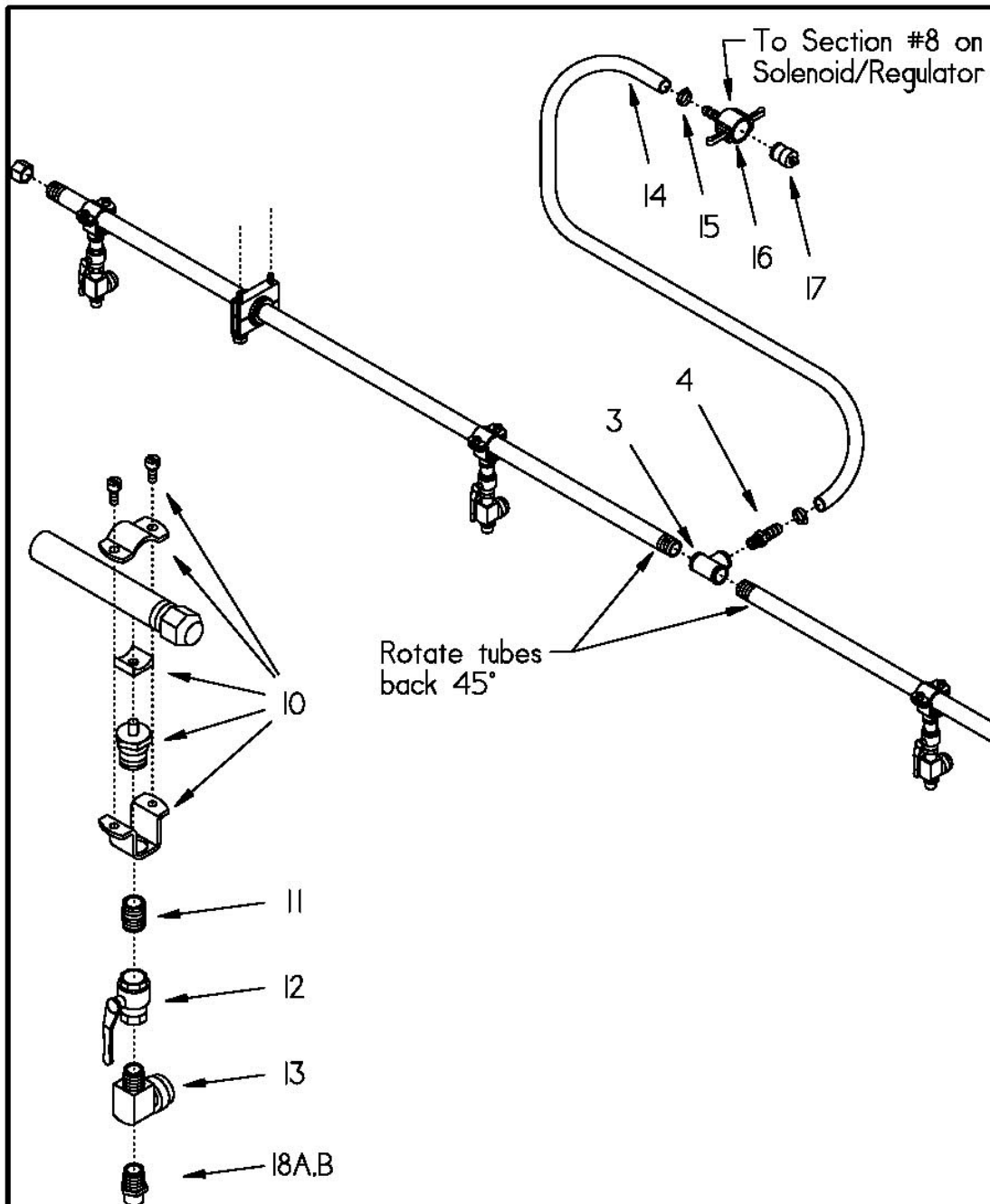
1. Standard skid 2 chemical pump configuration.
2. 3/4" Hoses & clamps not shown for clarity. Refrer to Chassis closed load system dwg.

<b>NORSTAR</b> INDUSTRIES, INC.		2302 A St. S.E. Auburn WA 98002	
TITLE: 2 TANK SKID CLOSED LOAD LEGACY PUMP			
DRAWN BY: J GOULET	CHECKED BY:	SCALE: 1:10	PAGE: 1/1
DATE CREATED: 12/18/02	DRAWING NUMBER: NSC-90155-V2	DATE REVISED: 7/27/06	

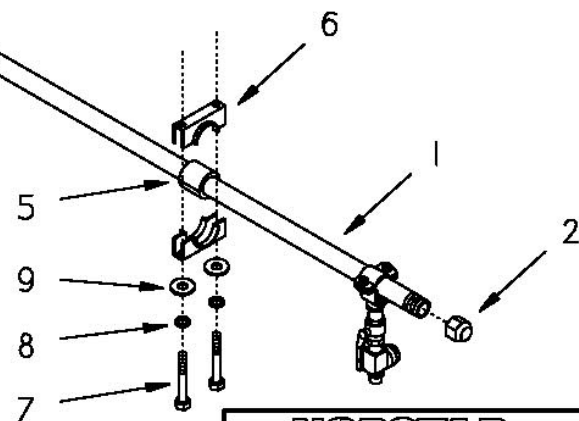


Item	Qty	Part Number	Description
1	1	SPR-4208	1" Flat Face QD Male - Poly
2	1	PPF-SBR-12BX16MP	Hose Barb
3	1	PPF-SBR-12BX12MP	Hose Barb
4	1	PVF-9EL-12FKX12FP	Elbow
5	4'	PVF-PP-12	3/4" Schedule 40 PVC Pipe
6	12'	HSE-7225-12	3/4" PVC Suction Hose
7	2	FAS-7655-12	Hose Clamp

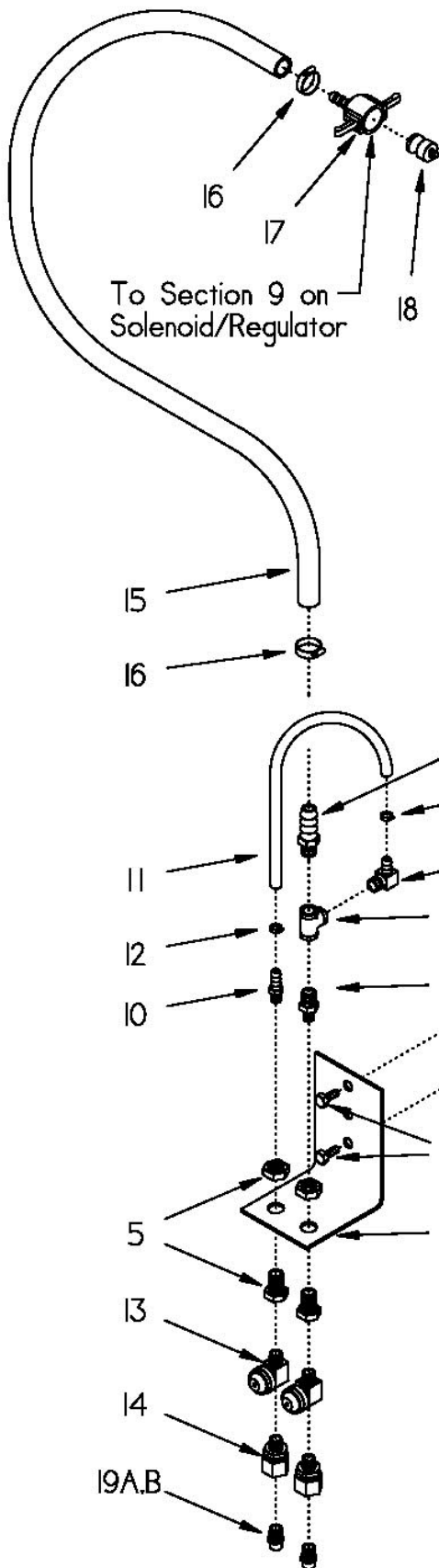
<b><i>NORSTAR</i></b> <small>INDUSTRIES, INC.</small>		2302 A St. S.E. Auburn WA 98002	
TITLE <b>CHEMICAL PROBE W/ FLAT FACE QD</b>			
DRAWN BY: <b>J GOULET</b>		CHECKED BY:	
DATE CREATED: <b>12/18/02</b>		DRAWING NUMBER: <b>ASM-3316-V2</b>	
		SCALE: <b>1:6</b>	
		PAGE: <b>1/1</b>	
		DATE REVISED:	



Item	Qty	Part Number	Description
1	2	FAB-2743	Brass Spray Bar Tube
2	2	BRF-CAP-08FP	1/2" Brass Pipe Cap
3	1	BRF-TEE-08FP	1/2" Brass Tee
4	1	BRF-SBR-08BX08MP	1/2" Brass Hose Barb
5	2	LHA-G16-8P	Rubber Bushing
6	4	LHA-HC16-I-2	Mounting Bracket
7	2	FAS-SHC-5/16-18X2 1/2-S	Hex Cap Screw
8	2	FAS-WL0-5/16-S	Lock Washer
9	2	FAS-WUS-5/16-S	USS Washer
10	4	SPS-742I 1/2 CT	Split Eyelet Assembly
11	4	BRF-NIP-04MP	1/4" Brass Nipple
12	4	LHA-BV04N	1/4" Brass Ball Valve
13	4	SPS-I0742A	Check Valve
13A	1	SPS-CP4620-FA	Diaphragm (Not Shown)
14	20'	HSE-7200-08	1/2" Bosflex Hose
15	2	FAS-7655-06	1/2" Gear Clamp
16	1	PPF-FQD-08B	Female Camlock
17	1	PPF-MQD-08X	Camlock Plug
18A	4	SPS-HI/4U6520	35 GPA Spraybar Nozzle
18B	4	SPS-HI/4U6515	25 GPA Spraybar Nozzle



<b>NORSTAR</b> <small>INDUSTRIES, INC.</small>		2302 A St. S.E. Auburn WA 98002	
TITLE: SPRAY BAR			
DRAWN BY: J GOULET	CHECKED BY:	SCALE: 1:10	PAGE: 1/1
DATE CREATED: 8/22/03	DRAWING NUMBER: NSC-90500	DATE REVISED:	



Item	Qty	Part Number	Description
1	1	FAB-2065	Drop Nozzle Bracket
2	1	FAB-2063	Drop Nozzle Angle mount
3	2	FAS-SHC-5/16-18X3/4-S	5/16-18 x 3/4" Hex Cap Screw
4	2	FAS-NYS-5/16-18-S	5/16-18 Nyloc Nut
5	2	BRF-BHD-04FP	1/4 Brass Bulkhead Fitting
6	1	BRF-HXN-06MPX04MP	3/8" x 1/4" Brass Hex Nipple
7	1	BRF-TEE-06FP	3/8" Brass Tee
8	1	BRF-9BR-04BX06MP	3/8" x 1/4" Brass 90° Hose Barb
9	1	BRF-SBR-08BX06MP	1/2" x 3/8" Brass Hose Barb
10	1	BRF-SBR-04BX04MP	1/4" Brass Hose Barb
11	1	HSE-7200-04	1/4" Bosflex Hose
12	2	FAS-7655-04	1/4" Gear Clamp
13	2	SPS-10742A	Check Valve 1/4"MPT x 1/4" FPT
14	2	SPS-36275-1/4X1/4	Ball Swivel 1/4"MPT x 1/4" FPT
15	2	Part Number	1/2" Bosflex Hose
16	2	FAS-7655-06	3/8" Gear Clamp
17	1	PPF-FQD-08B	Description
18	1	PPF-MQD-08X	Description
19A	2	SPS-HI/4U50I5	35 GPA Nozzle Set
19B	2	SPS-HI/4U50I0	25 GPA Nozzle Set

<b>NORSTAR</b> INDUSTRIES, INC.		2302 A St. S.E. Auburn WA 98002	
TITLE <b>DROP NOZZLE ASSEMBLY</b>			
DRAWN BY: <b>J GOULET</b>	CHECKED BY:	SCALE: <b>1:9</b>	PAGE: <b>1/1</b>
DATE CREATED: <b>8/10/04</b>	DRAWING NUMBER: <b>NSC-20320</b>	DATE REVISED:	



## **WARRANTY STATEMENT**

NORSTAR INDUSTRIES, INC. warrants to Purchaser for use, that, if any part of the product proves to be defective, in material or workmanship, within one (1) year from date of original installation, and is returned to NORSTAR INDUSTRIES, INC. within thirty (30) days after such defect is discovered, NORSTAR INDUSTRIES, INC. will, (at its option) either replace or repair said part. All returns shall be authorized prior to shipment. Freight will be prepaid by customer.

This warranty does not apply to normal deterioration, due to wear and/or exposure to the elements, damage resulting from misuse, neglect, accident, improper installation and/or maintenance, or use of non-compatible chemicals.

Said part will not be considered defective if it substantially fulfills the performance specifications.

Auxiliary power equipment resold by NORSTAR INDUSTRIES, INC. (gasoline engine) is warranted by the manufacturer, **NOT** by NORSTAR INDUSTRIES, INC. Electronic components are not to be disassembled, without the express written permission of NORSTAR INDUSTRIES, INC.

In the event of a defect in the sprayer control or injection pump, Norstar Industries, Inc. will provide a loaner injection sprayer control (computer) and/or injection pump, within twenty four (24) hours from the time user and Norstar Industries determine repairs cannot be made in the field.

Defective parts returned to NORSTAR INDUSTRIES, INC. must include a packing slip with the following information: Sprayer Model, Serial Number, Date Installed, Dealer from whom purchased.

NORSTAR INDUSTRIES, INC. neither assumes, nor authorizes anyone to assume for it, any other obligation or liability in connection with said part, and will not be liable for consequential damages.

**THE FOREGOING WARRANTY IS EXCLUSIVE AND IN LIEU OF ALL OTHER WARRANTIES OF MERCHANTABILITY FITNESS FOR PURPOSE AND OF ANY OTHER TYPE, OF WARRANTY, WHETHER EXPRESS, OR IMPLIED. NO AGREEMENT MODIFYING, OR EXTENDING THIS WARRANTY, WILL BE BINDING ON NORSTAR INDUSTRIES, INC., UNLESS IN WRITING AND SIGNED BY AN AUTHORIZED EMPLOYEE OF NORSTAR INDUSTRIES, INC.**