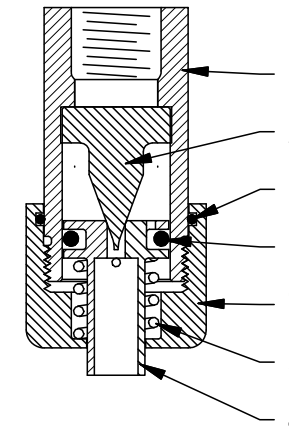
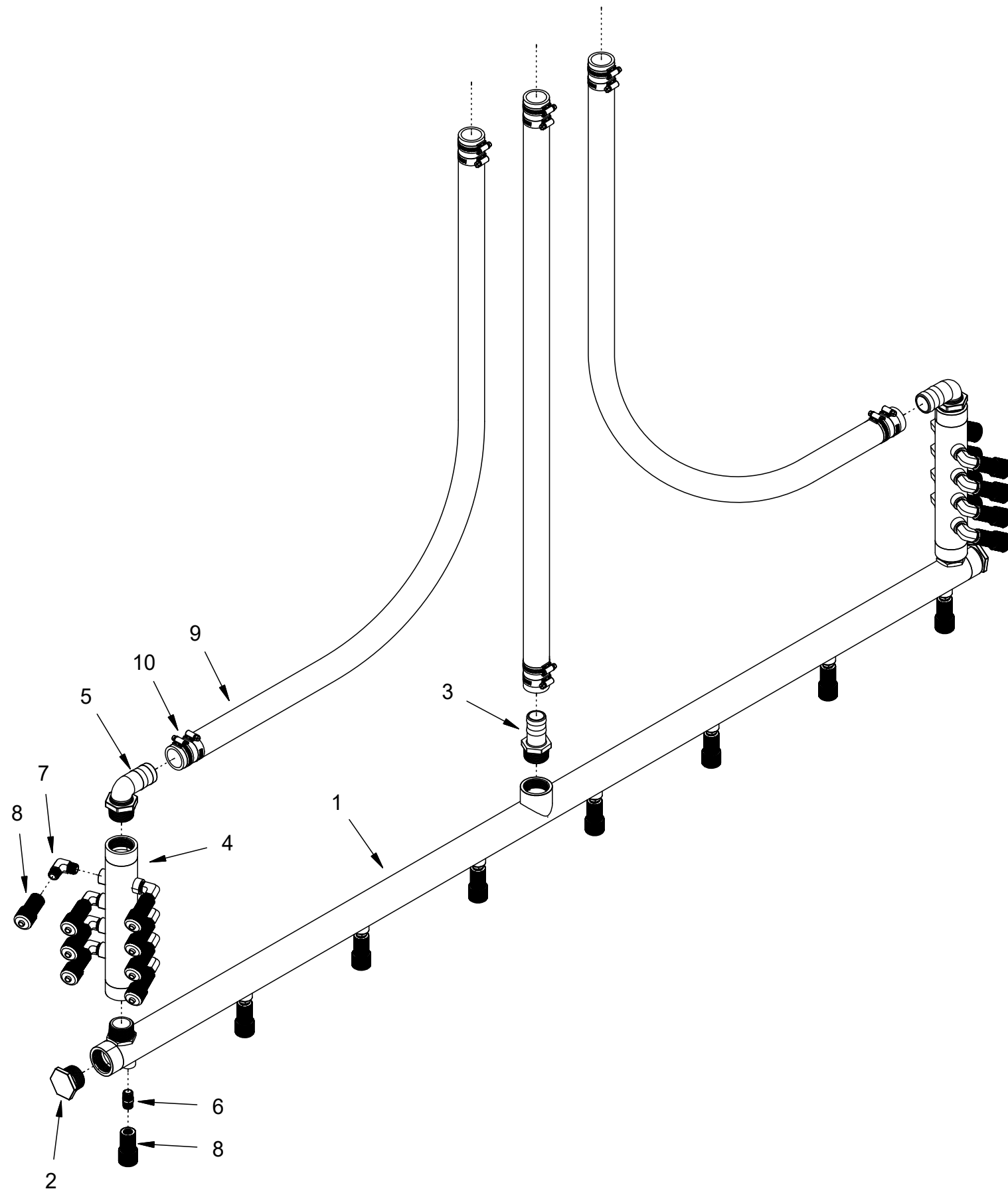


To Electric Ball Valve Bank Assembly

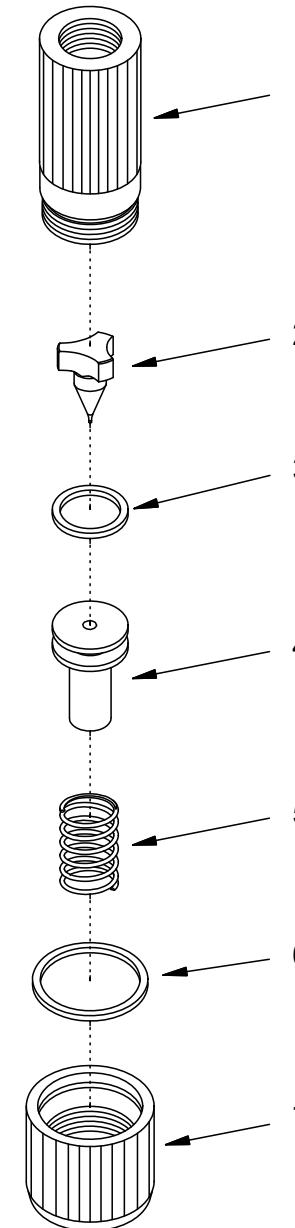


Item	Qty	Part Number	Description
1	1	FAB-3157-V2	Stainless Steel Spray Bar
2	2	PPF-HXP-20MP	1 1/4" Poly Hex Plug
3	1	PPF-SBR-20BX20MP	1 1/4" Poly Hose Barb
4	2	FAB-3158-V2	Stainless Steel Side Manifold
5	2	PPF-9BR-20BX20MP	1 1/4" Poly 90° Hose Barb
6	8	BRF-HXN-06MP	3/8" Brass Hex Nipple
7	16	BRF-9EL-06MP	3/8" Brass Double Male Elbow
8	24	ASM-3175	Variable Orifice Nozzle Assembly
9	3	HSE-7211-20	8' length 1 1/4" Black Horizon Hose
10	12	FAS-7655-20	1 1/4" Gear Clamp

ASM-3175 Variable Orifice Nozzle Assembly			
Item	Qty	Part Number	Description
1	1	FAB-3160	Nozzle Body
2	1	FAB-3166	Meter Stub
3	1	ORI-2-206	O-Ring
4	1	FAB-3165	Orifice Piston
5	1	SPR-4670	Spring
6	1	ORI-2-022	O-Ring
7	1	FAB-3167	Retainer Cap

NOZZLE ADJUSTMENT:

TIGHTEN THE ADJUSTING CAP UNTIL IT BOTTOMS OUT AND CAN BE TIGHTENED NO FURTHER. LOOSEN THE CAP UNTIL THE SCORE MARKS LINE UP. CONTINUE TO BACK THE CAP OFF, IN A COUNTER-CLOCKWISE DIRECTION, FOR TWO FULL TURNS. THE SCORE MARKS SHOULD BE ALLIGNED AND THE NOZZLE IS CORRECTLY ADJUSTED.



PLEASE NOTE: EACH INDIVIDUAL NOZZLE HAS BEEN CALIBRATED. MAKE SURE ALL PARTS ARE KEPT TOGETHER FOR EACH NOZZLE WHEN SERVICING.

NORSTAR INDUSTRIES, INC.		2302 A St. S.E. Auburn WA 98002	
TITLE: ANTI-ICE SPRAYBAR VARIABLE ORIFICE NOZZLE			
DRAWN BY: J GOULET	CHECKED BY:	SCALE:	PAGE: 1/1
DATE CREATED: 12/10/03	DRAWING NUMBER:	DATE REVISED:	